

Product datasheet for CS522875

Frozen Tissue Sections, Stomach

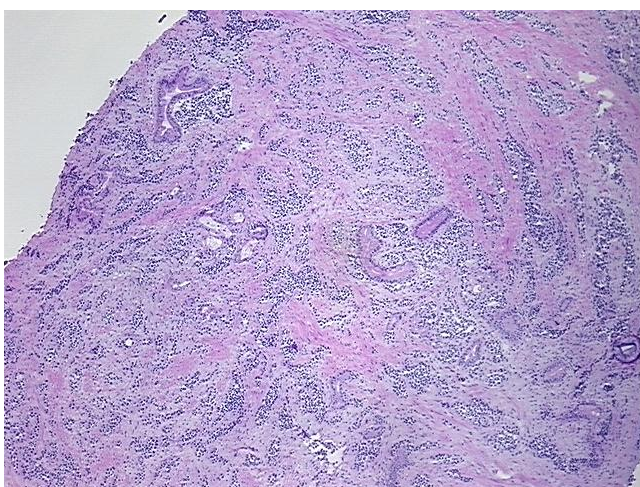
Product data:

Product Type:	Frozen Sections
Disease State:	Cancer
Diagnosis Category:	Carcinoid/Neuroendocrine Tumors
Tissue:	Stomach
Frozen Sample ID:	FR0002284F
Case ID:	CI0000008929
Tissue of Origin:	Stomach
Site of Finding:	Stomach
Appearance:	T
Sample Diagnosis (from Pathology Verification):	Tumor of stomach, carcinoid
Normal:	0%
Lesional:	0%
Tumor:	90%
Tumor Hypo/Acellular Stroma:	0%
Tumor Hypercellular Stroma:	10%
Necrosis:	0%
CASE Diagnosis (from medical center path report):	Tumor of stomach, carcinoid
Age:	40
Gender:	Female
Race:	White or Caucasian
Tumor Grade:	Not Reported

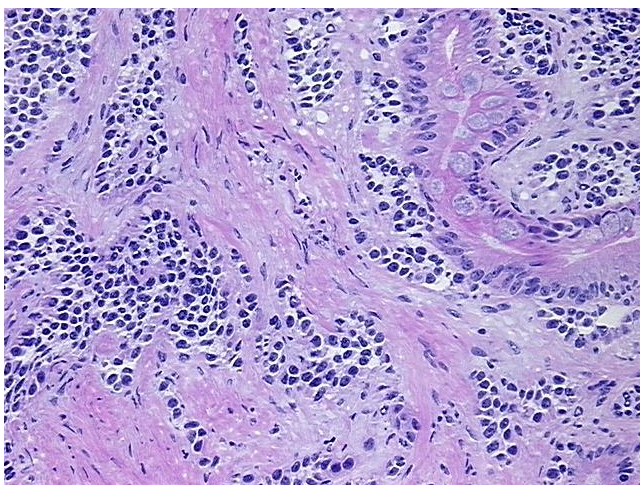


[View online »](#)

Minimum Stage Grouping:	Not Reported
T (Extent of Primary Tumor):	Not Reported
N (Lymph node metastasis):	Not Reported
M (Distant metastasis):	Not Reported
Storage:	Store frozen tissue sections at -80°C.
Stability:	All frozen tissue sections are stable for 1 year from date of purchase if stored at -80°C without repeated freeze/thaws.

Product images:

4x Image



20x Image