

Product datasheet for **CS522865**

Frozen Tissue Sections, Cartilage

Product data:

| | |
|---|------------------------------|
| Product Type: | Frozen Sections |
| Disease State: | Other Disease |
| Diagnosis Category: | Arthritis |
| Tissue: | Cartilage |
| Frozen Sample ID: | FR65EE2F41 |
| Case ID: | CI0000008928 |
| Tissue of Origin: | Cartilage |
| Site of Finding: | Cartilage |
| Appearance: | L |
| Sample Diagnosis (from Pathology Verification): | Osteoarthritis |
| Normal: | 0% |
| Lesional: | 100% |
| Tumor: | 0% |
| Tumor Hypo/Acellular Stroma: | 0% |
| Tumor Hypercellular Stroma: | 0% |
| Necrosis: | 0% |
| Pathology Verification notes from H&E review: | 10% chondrocytes, 90% matrix |
| CASE Diagnosis (from medical center path report): | Osteoarthritis |
| Age: | 73 |
| Gender: | Female |
| Race: | White or Caucasian |



[View online »](#)

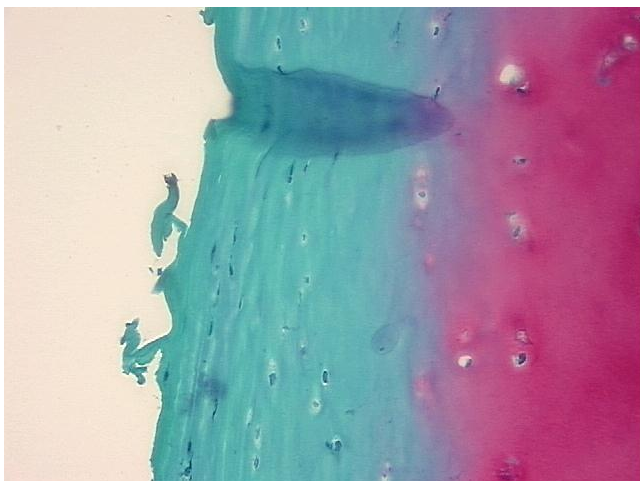
Storage: Store frozen tissue sections at -80°C.

Stability: All frozen tissue sections are stable for 1 year from date of purchase if stored at -80°C without repeated freeze/thaws.

Product images:



4x Image



20x Image