

Product datasheet for CS522234

Frozen Tissue Sections, Endometrium

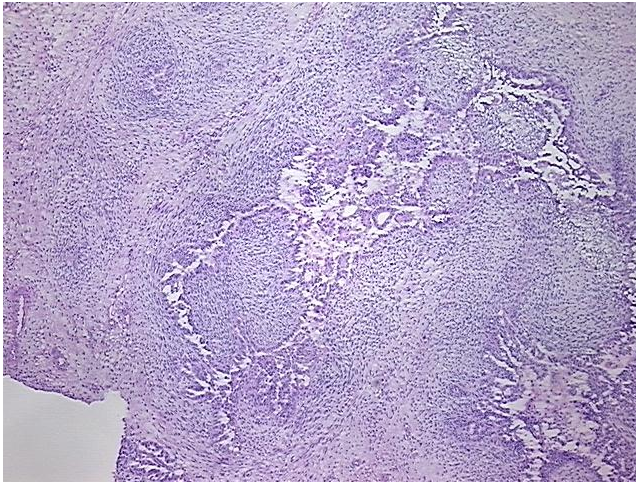
Product data:

Product Type:	Frozen Sections
Disease State:	Cancer
Diagnosis Category:	Sarcoma
Tissue:	Endometrium
Frozen Sample ID:	FR0002810E
Case ID:	CI0000008742
Tissue of Origin:	Endometrium
Site of Finding:	Endometrium
Appearance:	T
Sample Diagnosis (from Pathology Verification):	Carcinosarcoma of endometrium
Normal:	0%
Lesional:	0%
Tumor:	80%
Tumor Hypo/Acellular Stroma:	0%
Tumor Hypercellular Stroma:	20%
Necrosis:	0%
Pathology Verification notes from H&E review:	predominantly endometrial adenocarcinoma in this section
CASE Diagnosis (from medical center path report):	Carcinosarcoma of endometrium
Age:	71
Gender:	Female
Race:	White or Caucasian

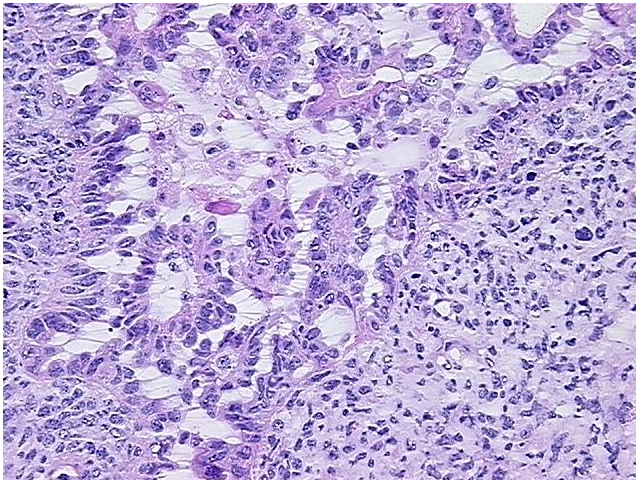


[View online »](#)

Tumor Grade:	FIGO G3: Poorly differentiated
Minimum Stage Grouping:	IIA
T (Extent of Primary Tumor):	T2a
N (Lymph node metastasis):	NX
M (Distant metastasis):	MX
Storage:	Store frozen tissue sections at -80°C.
Stability:	All frozen tissue sections are stable for 1 year from date of purchase if stored at -80°C without repeated freeze/thaws.

Product images:

4x Image



20x Image