

Product datasheet for **CS522162**

Frozen Tissue Sections, Breast

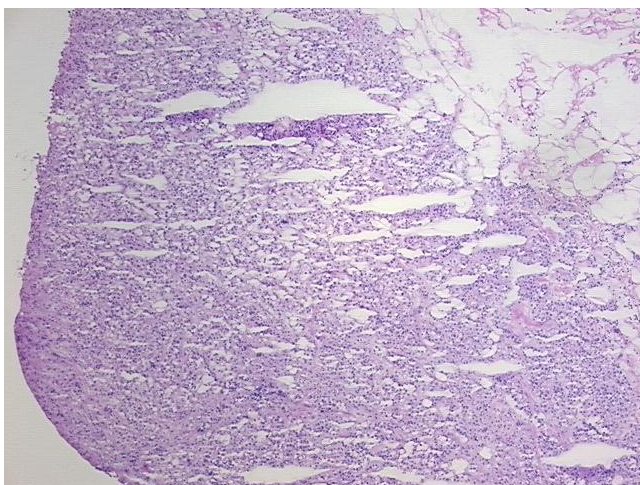
Product data:

| | |
|---|--|
| Product Type: | Frozen Sections |
| Disease State: | Cancer |
| Diagnosis Category: | Breast Cancer |
| Tissue: | Breast |
| Frozen Sample ID: | FR00027D0C |
| Case ID: | CI0000008722 |
| Tissue of Origin: | Breast |
| Site of Finding: | Breast |
| Appearance: | T |
| Sample Diagnosis (from Pathology Verification): | Adenocarcinoma of breast, ductal |
| Normal: | 60% |
| Lesional: | 0% |
| Tumor: | 35% |
| Tumor Hypo/Acellular Stroma: | 0% |
| Tumor Hypercellular Stroma: | 5% |
| Necrosis: | 0% |
| Pathology Verification notes from H&E review: | normal: 20% glandular epithelium, 30% fibrous stroma, 50% adipose tissue |
| CASE Diagnosis (from medical center path report): | Adenocarcinoma of breast, ductal |
| Age: | 68 |
| Gender: | Female |
| Race: | Black or African American |

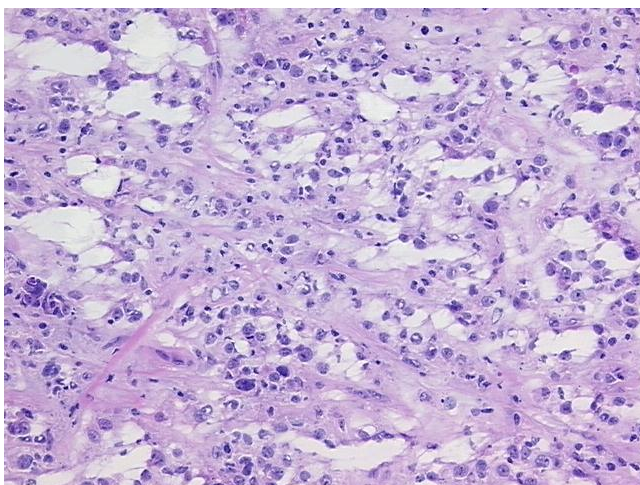


[View online »](#)

| | |
|-------------------------------------|--|
| Tumor Grade: | Nottingham G3: 8-9 points High combined grade (unfavorable) |
| Minimum Stage Grouping: | IIIC |
| T (Extent of Primary Tumor): | T2 |
| N (Lymph node metastasis): | N3 |
| M (Distant metastasis): | MX |
| Diagnostic Test Results: | Estrogen receptor ~ ER ! by IHC,Negative; HER2 ~ ERBB2 ~ Neu ! by IHC,Negative |
| Storage: | Store frozen tissue sections at -80°C. |
| Stability: | All frozen tissue sections are stable for 1 year from date of purchase if stored at -80°C without repeated freeze/thaws. |

Product images:

4x Image



20x Image