

Product datasheet for **CS522066**

Frozen Tissue Sections, Artery: carotid

Product data:

Product Type:	Frozen Sections
Disease State:	Other Disease
Diagnosis Category:	Atherosclerosis
Tissue:	Artery
Frozen Sample ID:	FR00027B7D
Case ID:	CI0000008683
Tissue of Origin:	Artery: carotid
Site of Finding:	Artery: carotid
Appearance:	L
Sample Diagnosis (from Pathology Verification):	Atherosclerotic plaque
Normal:	0%
Lesional:	100%
Tumor:	0%
Tumor Hypo/Acellular Stroma:	0%
Tumor Hypercellular Stroma:	0%
Necrosis:	0%
Pathology Verification notes from H&E review:	Non Tumor Structures: 10% Vessel, 90% Atherosclerotic debris
CASE Diagnosis (from medical center path report):	Atherosclerotic plaque
Age:	74
Gender:	Male
Race:	White or Caucasian

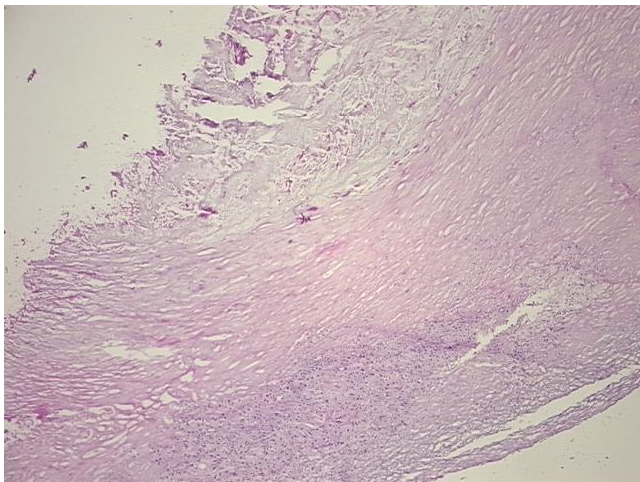


[View online »](#)

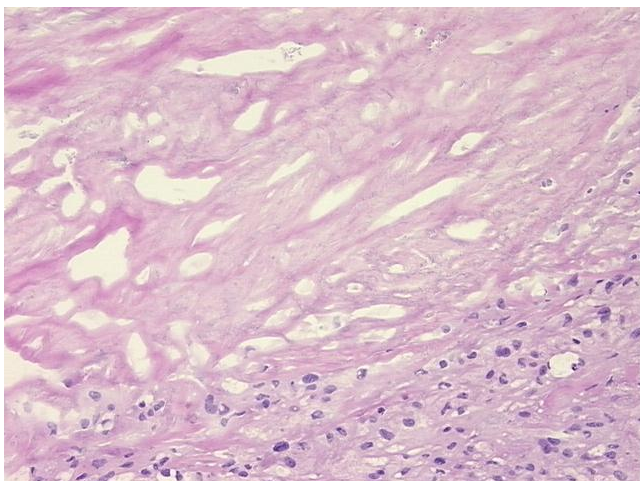
Storage: Store frozen tissue sections at -80°C.

Stability: All frozen tissue sections are stable for 1 year from date of purchase if stored at -80°C without repeated freeze/thaws.

Product images:



4x Image



20x Image