

Product datasheet for **CS521588**

Frozen Tissue Sections, Skin

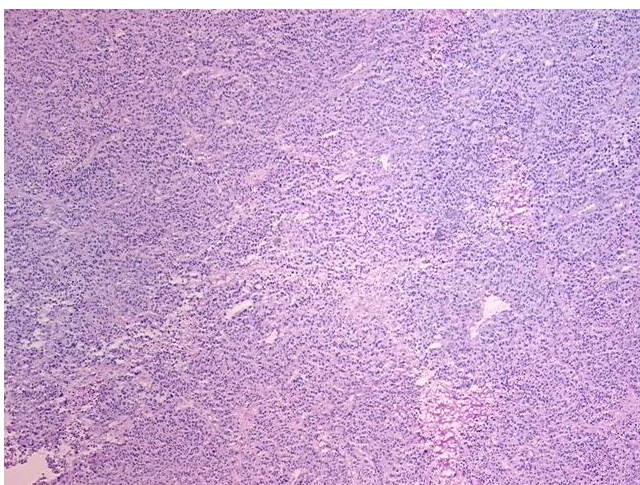
Product data:

Product Type:	Frozen Sections
Disease State:	Cancer
Diagnosis Category:	Melanoma
Tissue:	Skin
Frozen Sample ID:	FR0002654A
Case ID:	CI0000008574
Tissue of Origin:	Skin
Site of Finding:	Lung
Appearance:	T
Sample Diagnosis (from Pathology Verification):	Malignant melanoma, metastatic
Normal:	45%
Lesional:	0%
Tumor:	55%
Tumor Hypo/Acellular Stroma:	0%
Tumor Hypercellular Stroma:	0%
Necrosis:	0%
CASE Diagnosis (from medical center path report):	Malignant melanoma, metastatic
Age:	73
Gender:	Male
Race:	White or Caucasian
Tumor Grade:	Not Reported

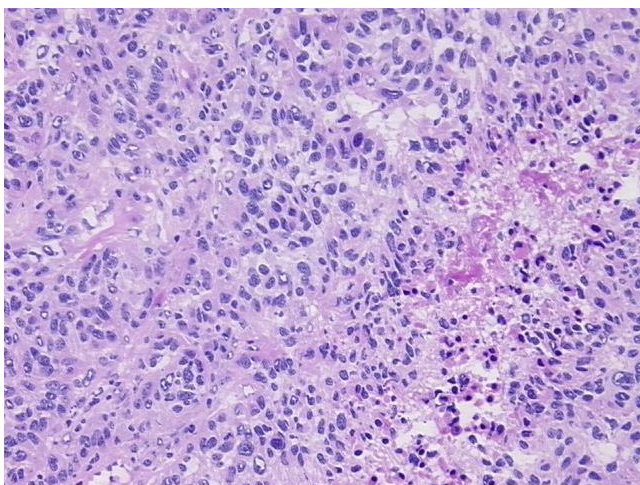


[View online »](#)

Minimum Stage Grouping:	IV
T (Extent of Primary Tumor):	TX
N (Lymph node metastasis):	NX
M (Distant metastasis):	M1b
Diagnostic Test Results:	Cytokeratin (Pan) ~ Keratin, Pan ! by IHC,Reported as Performed or Reviewed; S100 protein,Reported as Performed or Reviewed; Synaptophysin ~ SYN ! by IHC,Reported as Performed or Reviewed; HMB45 melanoma antigen ~ GP100 ! by IHC,Reported as Performe
Storage:	Store frozen tissue sections at -80°C.
Stability:	All frozen tissue sections are stable for 1 year from date of purchase if stored at -80°C without repeated freeze/thaws.

Product images:

4x Image



20x Image