

## Product datasheet for **CS521575**

### Frozen Tissue Sections, Pleura

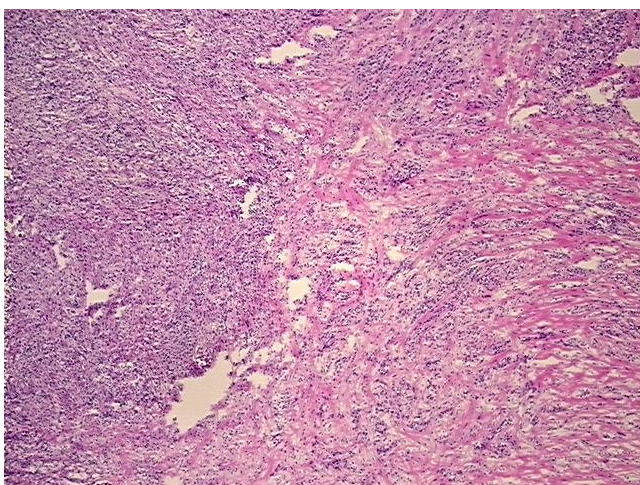
#### Product data:

Product Type:	Frozen Sections
Disease State:	Cancer
Diagnosis Category:	Mesothelioma
Tissue:	Lung
Frozen Sample ID:	FR000265A2
Case ID:	CI0000008573
Tissue of Origin:	Pleura
Site of Finding:	Pleura
Appearance:	T
Sample Diagnosis (from Pathology Verification):	Mesothelioma of pleura, mixed
Normal:	0%
Lesional:	0%
Tumor:	50%
Tumor Hypo/Acellular Stroma:	50%
Tumor Hypercellular Stroma:	0%
Necrosis:	0%
Pathology Verification notes from H&E review:	Tumor Stroma (Hypo/Acellular): Fibrosis, Myxoid
CASE Diagnosis (from medical center path report):	Mesothelioma of pleura, mixed
Age:	71
Gender:	Male
Race:	White or Caucasian

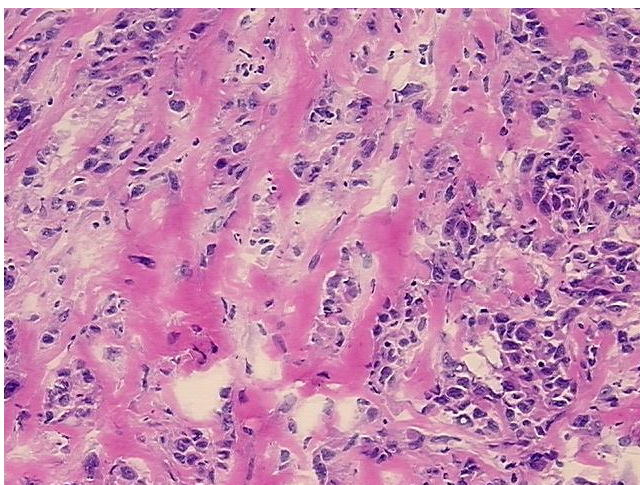


[View online »](#)

<b>Tumor Grade:</b>	Not Reported
<b>Minimum Stage Grouping:</b>	IV
<b>T (Extent of Primary Tumor):</b>	T4
<b>N (Lymph node metastasis):</b>	NX
<b>M (Distant metastasis):</b>	MX
<b>Diagnostic Test Results:</b>	Cytokeratin (Pan) ~ Keratin, Pan ! by IHC,Positive; Epithelial specific antigen ~ BerEP4 ~ MOC31 ! by IHC,Positive, focal; CD66e ~ CEACAM5 ! by IHC,Positive, focal; CD15 ~ Lewis X ~ Leu M1 ! by IHC,Negative; Calretinin,Positive; Thyroid transc
<b>Storage:</b>	Store frozen tissue sections at -80°C.
<b>Stability:</b>	All frozen tissue sections are stable for 1 year from date of purchase if stored at -80°C without repeated freeze/thaws.

**Product images:**

4x Image



20x Image