

Product datasheet for CS521394

Frozen Tissue Sections, Endometrium

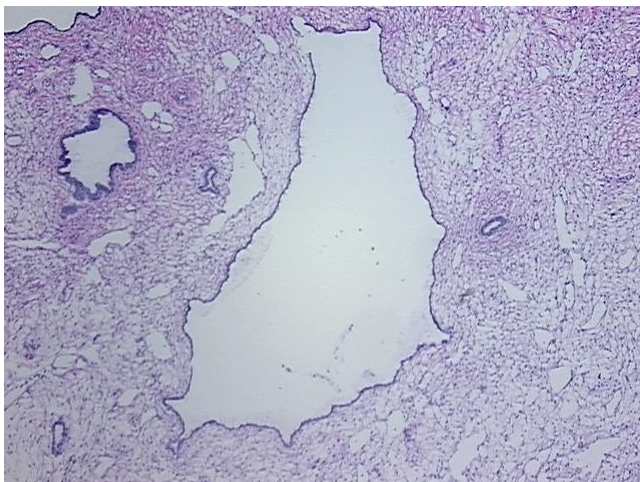
Product data:

Product Type:	Frozen Sections
Disease State:	Other Disease
Diagnosis Category:	Polyps
Tissue:	Endometrium
Frozen Sample ID:	FR00023965
Case ID:	CI0000008516
Tissue of Origin:	Endometrium
Site of Finding:	Endometrium
Appearance:	L
Sample Diagnosis (from Pathology Verification):	Polyp of endometrium
Normal:	0%
Lesional:	100%
Tumor:	0%
Tumor Hypo/Acellular Stroma:	0%
Tumor Hypercellular Stroma:	0%
Necrosis:	0%
Pathology Verification notes from H&E review:	No normal architecture in lesional component
CASE Diagnosis (from medical center path report):	Adenocarcinoma of endometrium, clear cell, papillary serous
Age:	63
Gender:	Female
Race:	Not reported

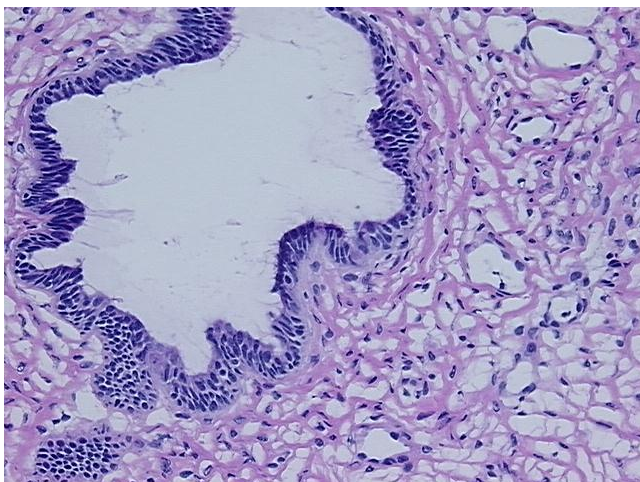


[View online »](#)

Tumor Grade:	FIGO G3: Poorly differentiated
Minimum Stage Grouping:	IA
T (Extent of Primary Tumor):	T1a
N (Lymph node metastasis):	N0
M (Distant metastasis):	MX
Storage:	Store frozen tissue sections at -80°C.
Stability:	All frozen tissue sections are stable for 1 year from date of purchase if stored at -80°C without repeated freeze/thaws.

Product images:

4x Image



20x Image