

## Product datasheet for **CS521393**

### Frozen Tissue Sections, Ovary: bilateral

#### Product data:

Product Type:	Frozen Sections
Disease State:	Normal
Diagnosis Category:	Normal
Tissue:	Ovary
Frozen Sample ID:	FR5B33EA02
Case ID:	CI0000008510
Tissue of Origin:	Ovary: bilateral
Site of Finding:	Ovary: bilateral
Appearance:	R
Sample Diagnosis (from Pathology Verification):	Within normal limits
Normal:	100%
Lesional:	0%
Tumor:	0%
Tumor Hypo/Acellular Stroma:	0%
Tumor Hypercellular Stroma:	0%
Necrosis:	0%
Pathology Verification notes from H&E review:	70% ovarian stroma, 30% hilar vessels
CASE Diagnosis (from medical center path report):	Endometriosis
Age:	42
Gender:	Female
Race:	White or Caucasian

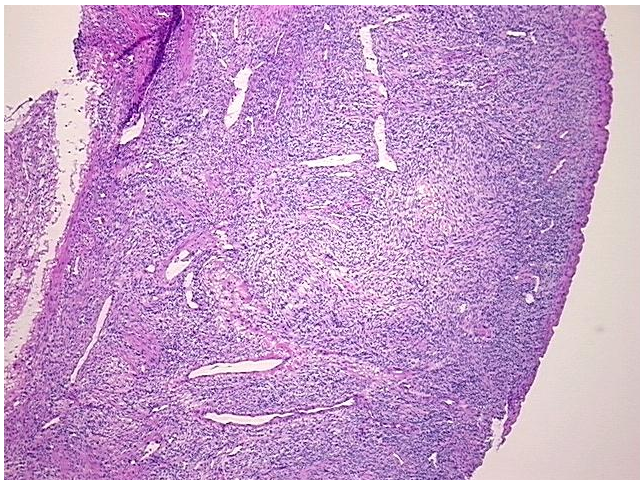


[View online »](#)

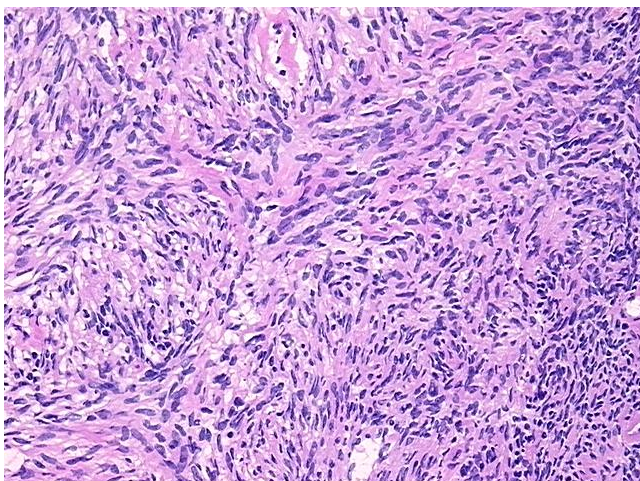
**Storage:** Store frozen tissue sections at -80°C.

**Stability:** All frozen tissue sections are stable for 1 year from date of purchase if stored at -80°C without repeated freeze/thaws.

**Product images:**



4x Image



20x Image