

Product datasheet for CS521245

Frozen Tissue Sections, Endometriotic tissue

Product data:

| | |
|---|---|
| Product Type: | Frozen Sections |
| Disease State: | Other Disease |
| Diagnosis Category: | Endometriosis |
| Tissue: | Endometriotic tissue |
| Frozen Sample ID: | FR5B33E99A |
| Case ID: | CI0000008486 |
| Tissue of Origin: | Endometriotic tissue |
| Site of Finding: | Ovary: left |
| Appearance: | L |
| Sample Diagnosis (from Pathology Verification): | Endometriosis |
| Normal: | 80% |
| Lesional: | 20% |
| Tumor: | 0% |
| Tumor Hypo/Acellular Stroma: | 0% |
| Tumor Hypercellular Stroma: | 0% |
| Necrosis: | 0% |
| Pathology Verification notes from H&E review: | normal: 85% ovarian stroma, 15% hilar vessels; lesion: 100% stroma with macrophages |
| CASE Diagnosis (from medical center path report): | Endometriosis |
| Age: | 35 |
| Gender: | Female |
| Race: | White or Caucasian |

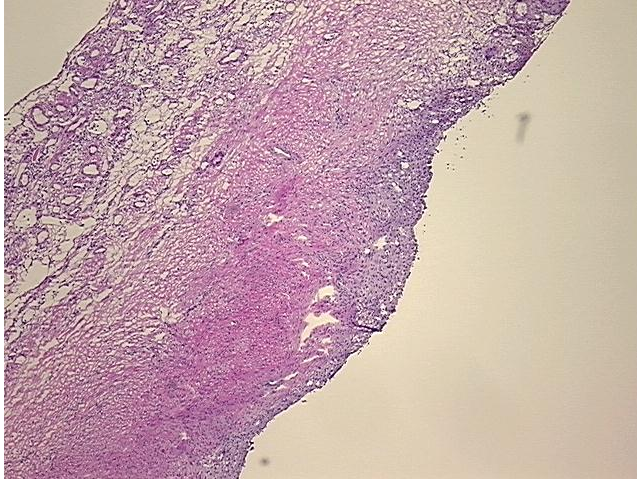


[View online »](#)

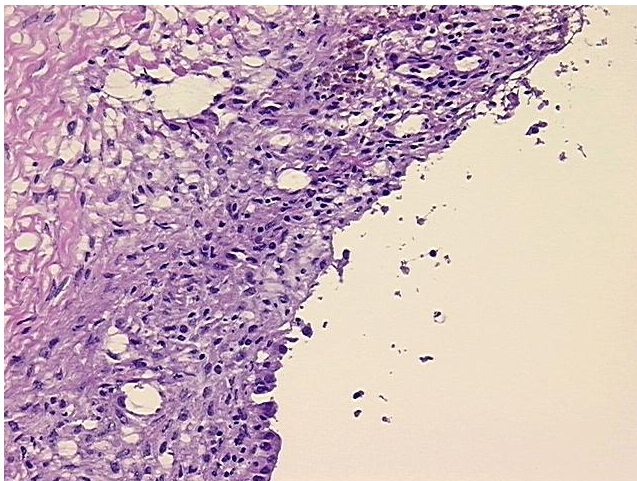
Storage: Store frozen tissue sections at -80°C.

Stability: All frozen tissue sections are stable for 1 year from date of purchase if stored at -80°C without repeated freeze/thaws.

Product images:



4x Image



20x Image