

Product datasheet for **CS521206**

Frozen Tissue Sections, Liver

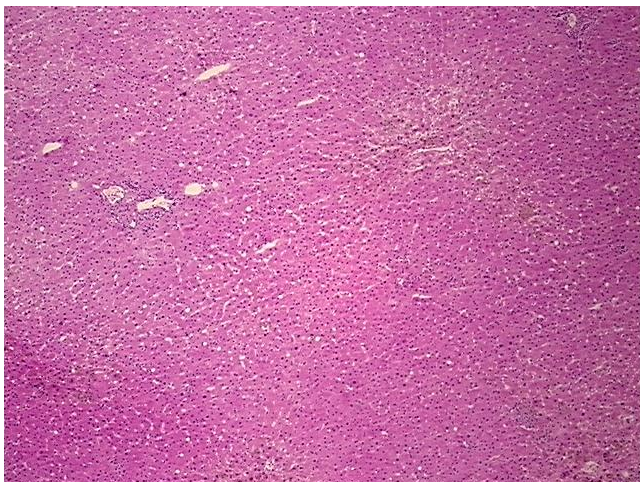
Product data:

| | |
|---|-------------------------------------|
| Product Type: | Frozen Sections |
| Disease State: | Normal |
| Diagnosis Category: | Normal |
| Tissue: | Liver |
| Frozen Sample ID: | FR5B33C399 |
| Case ID: | CI0000008475 |
| Tissue of Origin: | Liver |
| Site of Finding: | Liver |
| Appearance: | R |
| Sample Diagnosis (from Pathology Verification): | Within normal limits |
| Normal: | 100% |
| Lesional: | 0% |
| Tumor: | 0% |
| Tumor Hypo/Acellular Stroma: | 0% |
| Tumor Hypercellular Stroma: | 0% |
| Necrosis: | 0% |
| Pathology Verification notes from H&E review: | 95% lobules, 5% triads |
| CASE Diagnosis (from medical center path report): | Adenocarcinoma of colon, metastatic |
| Age: | 69 |
| Gender: | Female |
| Race: | Not reported |

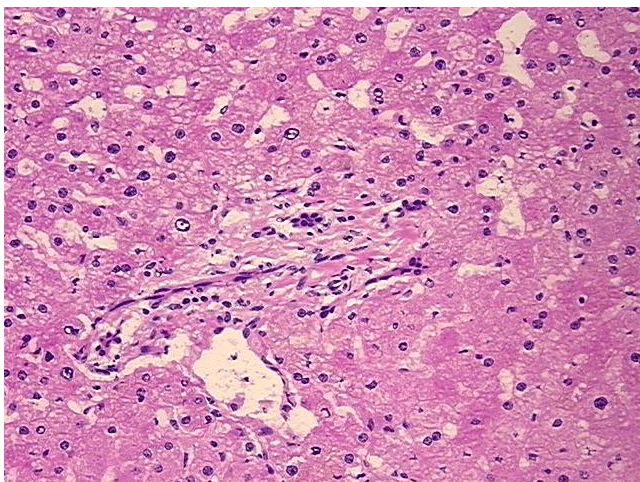


[View online »](#)

| | |
|------------------------------|--|
| Tumor Grade: | Not Reported |
| Minimum Stage Grouping: | IV |
| T (Extent of Primary Tumor): | TX |
| N (Lymph node metastasis): | NX |
| M (Distant metastasis): | M1 |
| Storage: | Store frozen tissue sections at -80°C. |
| Stability: | All frozen tissue sections are stable for 1 year from date of purchase if stored at -80°C without repeated freeze/thaws. |

Product images:

4x Image



20x Image