

## Product datasheet for CS520386

### Frozen Tissue Sections, Colon: sigmoid

#### Product data:

Product Type:	Frozen Sections
Disease State:	Other Disease
Diagnosis Category:	Diverticulitis
Tissue:	Colon
Frozen Sample ID:	FR0002737A
Case ID:	CI0000008270
Tissue of Origin:	Colon: sigmoid
Site of Finding:	Colon: sigmoid
Appearance:	L
Sample Diagnosis (from Pathology Verification):	Diverticulitis of colon
Normal:	0%
Lesional:	100%
Tumor:	0%
Tumor Hypo/Acellular Stroma:	0%
Tumor Hypercellular Stroma:	0%
Necrosis:	0%
Pathology Verification notes from H&E review:	10% mucosa, 10% submucosa, 80% muscle; architecture suggestive of diverticulum with inflammation
CASE Diagnosis (from medical center path report):	Diverticulitis of colon
Age:	70
Gender:	Male
Race:	White or Caucasian

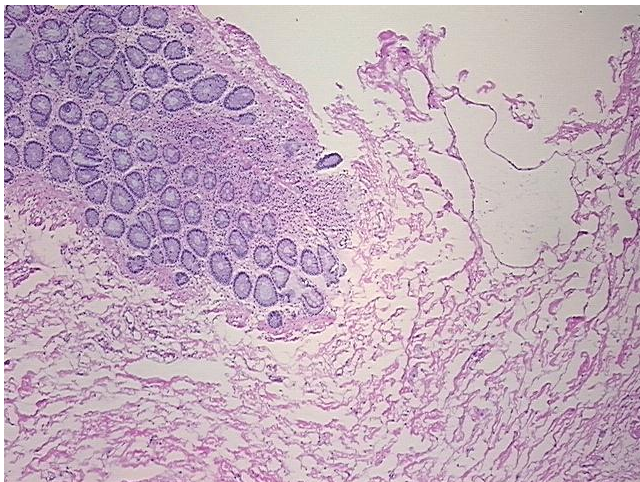


[View online »](#)

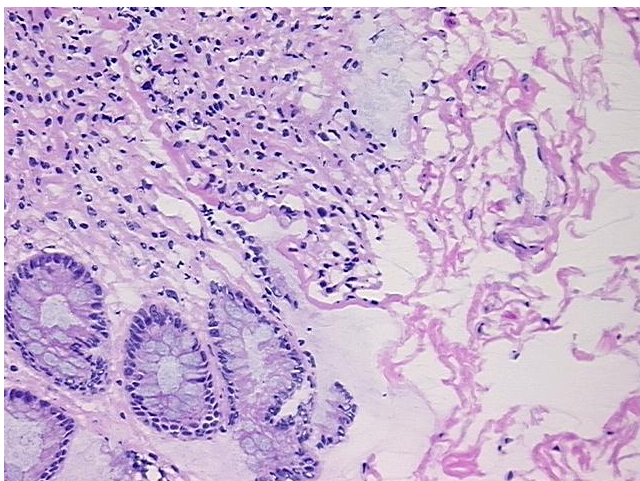
**Storage:** Store frozen tissue sections at -80°C.

**Stability:** All frozen tissue sections are stable for 1 year from date of purchase if stored at -80°C without repeated freeze/thaws.

**Product images:**



4x Image



20x Image