

## Product datasheet for **CS520158**

### Frozen Tissue Sections, Pleura

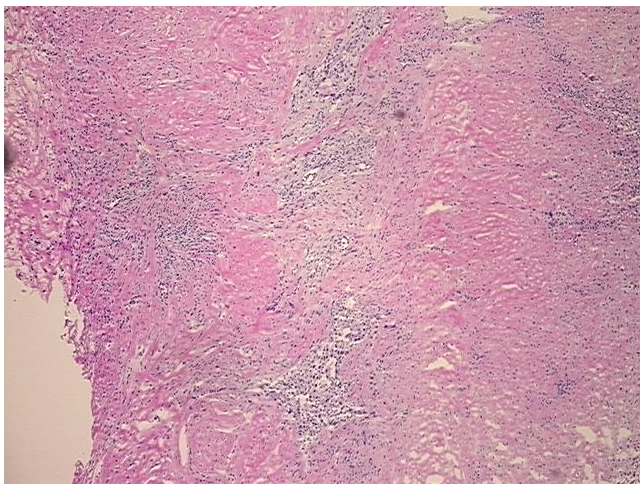
#### Product data:

Product Type:	Frozen Sections
Disease State:	Cancer
Diagnosis Category:	Mesothelioma
Tissue:	Lung
Frozen Sample ID:	FR0002731F
Case ID:	CI0000008220
Tissue of Origin:	Pleura
Site of Finding:	Pleura
Appearance:	T
Sample Diagnosis (from Pathology Verification):	Mesothelioma of pleura
Normal:	0%
Lesional:	0%
Tumor:	15%
Tumor Hypo/Acellular Stroma:	40%
Tumor Hypercellular Stroma:	25%
Necrosis:	20%
Pathology Verification notes from H&E review:	Tumor Stroma (Cellular): Desmoplastic reaction, Fibroblastic cells; Tumor Stroma (Hypo/Acellular): Fibrosis
CASE Diagnosis (from medical center path report):	Mesothelioma of pleura
Age:	73
Gender:	Male
Race:	White or Caucasian

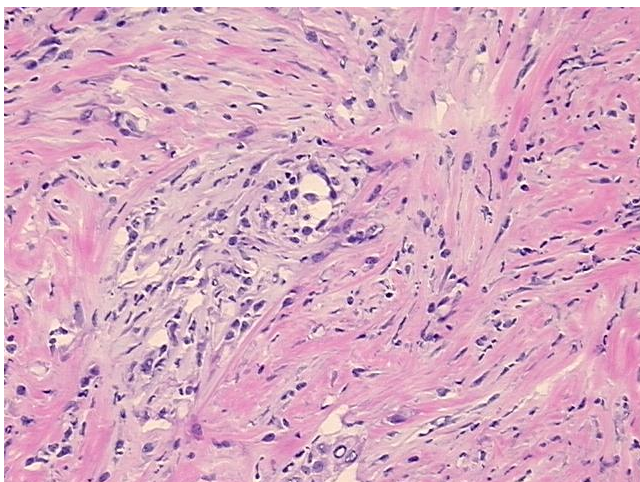


[View online »](#)

Tumor Grade:	Not Reported
Minimum Stage Grouping:	Not Reported
T (Extent of Primary Tumor):	TX
N (Lymph node metastasis):	NX
M (Distant metastasis):	MX
Storage:	Store frozen tissue sections at -80°C.
Stability:	All frozen tissue sections are stable for 1 year from date of purchase if stored at -80°C without repeated freeze/thaws.

**Product images:**

4x Image



20x Image