

## Product datasheet for **CS520052**

### Frozen Tissue Sections, Soft tissue

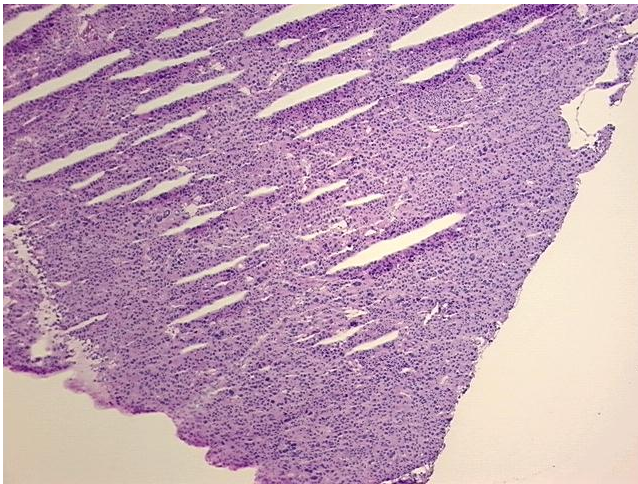
#### Product data:

Product Type:	Frozen Sections
Disease State:	Cancer
Diagnosis Category:	Sarcoma
Tissue:	Soft tissue
Frozen Sample ID:	FR000271EE
Case ID:	CI0000008204
Tissue of Origin:	Soft tissue
Site of Finding:	Chest wall
Appearance:	T
Sample Diagnosis (from Pathology Verification):	Histiocytoma, malignant fibrous
Normal:	0%
Lesional:	0%
Tumor:	95%
Tumor Hypo/Acellular Stroma:	0%
Tumor Hypercellular Stroma:	2%
Necrosis:	3%
Pathology Verification notes from H&E review:	Pathology report states that an extensive immunohistochemical work-up was performed and that a malignant fibrohistiocytoma is favored
CASE Diagnosis (from medical center path report):	Histiocytoma, malignant fibrous
Age:	72
Gender:	Female
Race:	White or Caucasian

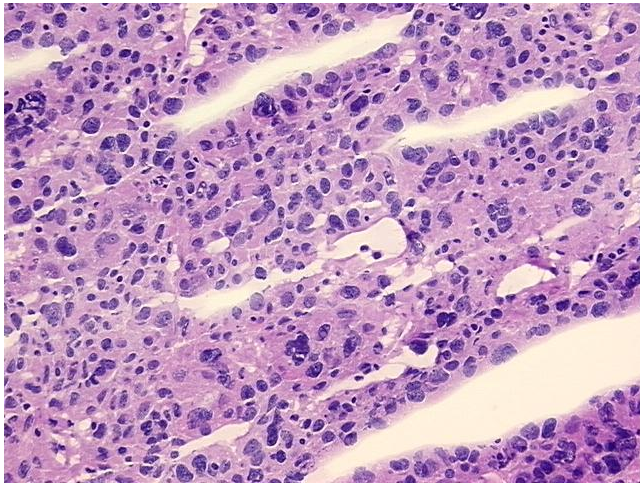


[View online »](#)

<b>Tumor Grade:</b>	AJCC G3-4: Poorly differentiated or undifferentiated
<b>Minimum Stage Grouping:</b>	III
<b>T (Extent of Primary Tumor):</b>	T2b
<b>N (Lymph node metastasis):</b>	NX
<b>M (Distant metastasis):</b>	MX
<b>Diagnostic Test Results:</b>	CD227 ~ MUC1 ~ EMA ~ CA15-3 ! by IHC,Negative; Cytokeratin (Pan) ~ Keratin, Pan ! by IHC,Negative; Vimentin ~ VIM ! by IHC,Positive; HMB45 melanoma antigen ~ GP100 ! by IHC,Negative; S100 protein,Negative; Cytokeratin 7 ~ CK7 ! by IHC,Negati
<b>Storage:</b>	Store frozen tissue sections at -80°C.
<b>Stability:</b>	All frozen tissue sections are stable for 1 year from date of purchase if stored at -80°C without repeated freeze/thaws.

**Product images:**

4x Image



20x Image