

Product datasheet for **CS519853**

Frozen Tissue Sections, Breast

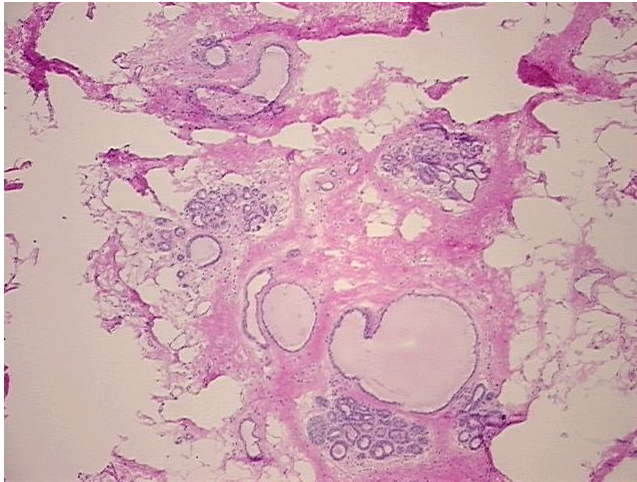
Product data:

Product Type:	Frozen Sections
Disease State:	Cancer
Diagnosis Category:	Breast Cancer
Tissue:	Breast
Frozen Sample ID:	FR00027129
Case ID:	CI0000008167
Tissue of Origin:	Breast
Site of Finding:	Breast
Appearance:	T
Sample Diagnosis (from Pathology Verification):	Carcinoma in situ of breast, ductal
Normal:	0%
Lesional:	90%
Tumor:	10%
Tumor Hypo/Acellular Stroma:	0%
Tumor Hypercellular Stroma:	0%
Necrosis:	0%
Pathology Verification notes from H&E review:	lesion: fibrocystic changes; 20% glandular epithelium, 80% fibrotic stroma
CASE Diagnosis (from medical center path report):	Adenocarcinoma of breast, ductal
Age:	41
Gender:	Female
Race:	White or Caucasian

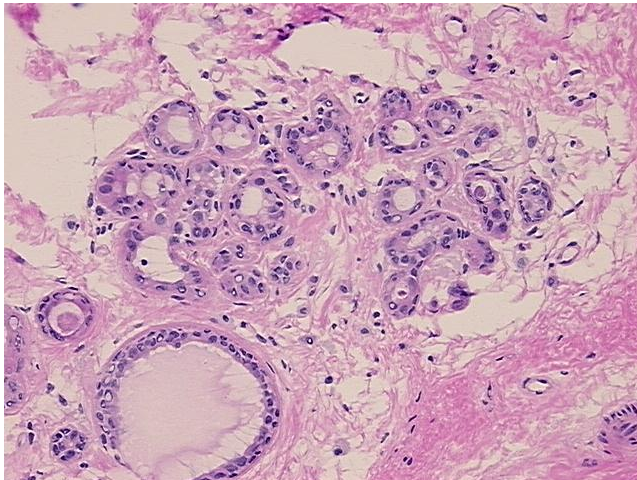


[View online »](#)

Tumor Grade:	NSABP Grade: Nuclear 2 of 3 & Histologic 3 of 3
Minimum Stage Grouping:	I
T (Extent of Primary Tumor):	T1a
N (Lymph node metastasis):	NX
M (Distant metastasis):	MX
Storage:	Store frozen tissue sections at -80°C.
Stability:	All frozen tissue sections are stable for 1 year from date of purchase if stored at -80°C without repeated freeze/thaws.

Product images:

4x Image



20x Image