

Product datasheet for **CS519706**

Frozen Tissue Sections, Kidney

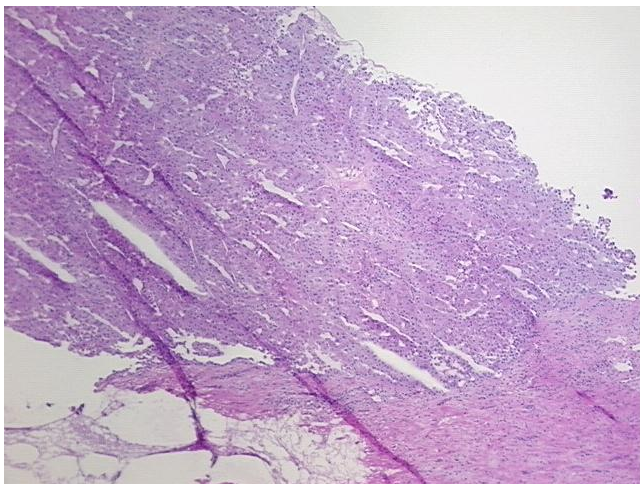
Product data:

Product Type:	Frozen Sections
Disease State:	Cancer
Diagnosis Category:	Renal Cell Carcinoma
Tissue:	Kidney
Frozen Sample ID:	FR00026DA3
Case ID:	CI0000008135
Tissue of Origin:	Kidney
Site of Finding:	Kidney
Appearance:	T
Sample Diagnosis (from Pathology Verification):	Carcinoma of kidney, renal cell, clear cell
Normal:	25%
Lesional:	0%
Tumor:	35%
Tumor Hypo/Acellular Stroma:	0%
Tumor Hypercellular Stroma:	25%
Necrosis:	15%
CASE Diagnosis (from medical center path report):	Carcinoma of kidney, renal cell, clear cell
Age:	49
Gender:	Male
Race:	White or Caucasian
Tumor Grade:	Fuhrman G4: Nuclei bizarre and multilobated

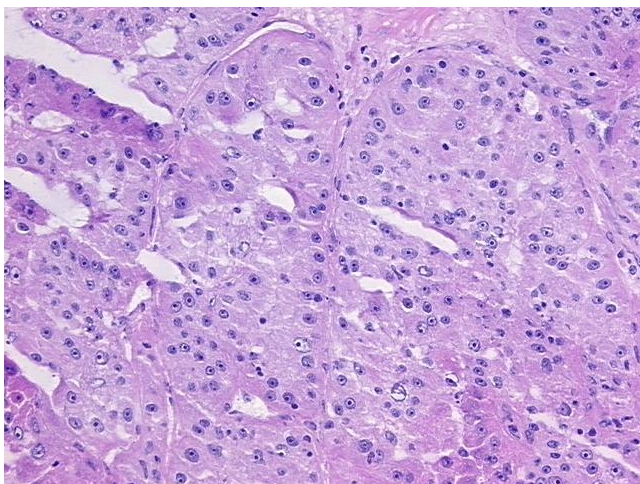


[View online »](#)

Minimum Stage Grouping:	IV
T (Extent of Primary Tumor):	T3
N (Lymph node metastasis):	N2
M (Distant metastasis):	M1
Diagnostic Test Results:	CD10 ~ CALLA ~ Common ALL antigen ! by IHC,Positive
Storage:	Store frozen tissue sections at -80°C.
Stability:	All frozen tissue sections are stable for 1 year from date of purchase if stored at -80°C without repeated freeze/thaws.

Product images:

4x Image



20x Image