

Product datasheet for **CS19657**

Frozen Tissue Sections, Colon

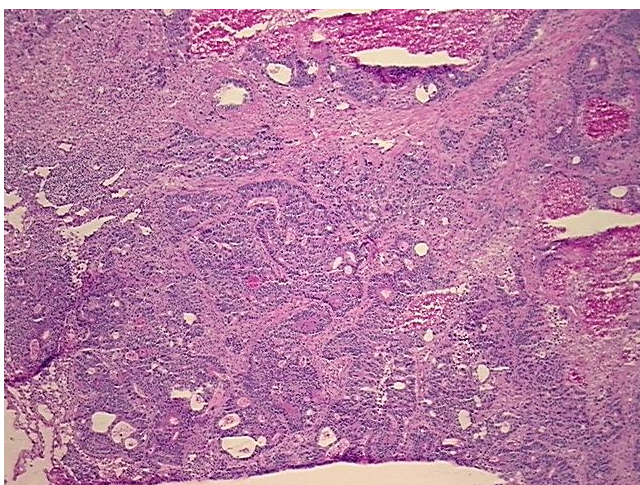
Product data:

Product Type:	Frozen Sections
Disease State:	Cancer
Diagnosis Category:	Colorectal Cancer
Tissue:	Colon
Frozen Sample ID:	FR00026BF7
Case ID:	CI0000008117
Tissue of Origin:	Colon
Site of Finding:	Lung
Appearance:	T
Sample Diagnosis (from Pathology Verification):	Adenocarcinoma of colon, metastatic
Normal:	10%
Lesional:	0%
Tumor:	55%
Tumor Hypo/Acellular Stroma:	0%
Tumor Hypercellular Stroma:	20%
Necrosis:	15%
CASE Diagnosis (from medical center path report):	Adenocarcinoma of colon, metastatic
Age:	56
Gender:	Male
Race:	White or Caucasian
Tumor Grade:	Not Reported

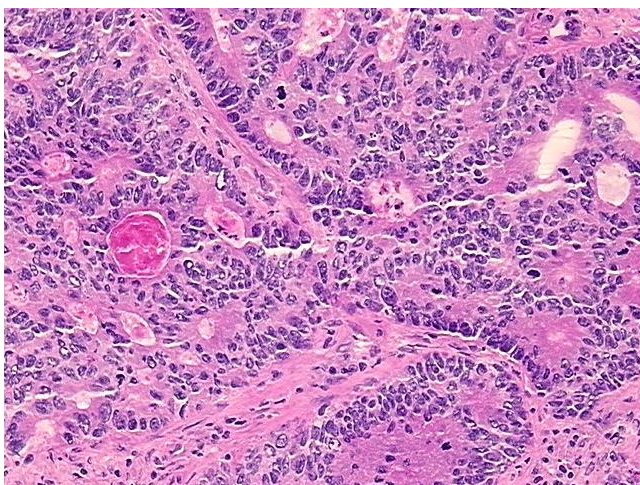

[View online »](#)

Minimum Stage Grouping:	IV
T (Extent of Primary Tumor):	TX
N (Lymph node metastasis):	N0
M (Distant metastasis):	M1
Diagnostic Test Results:	Cytokeratin 7 ~ CK7 ! by IHC,Negative; Cytokeratin 20 ~ CK20 ! by IHC,Positive; Cytokeratin CAM5.2 ~ CAM5.2 ! by IHC,Positive; Cytokeratin AE1/AE3 ~ AE1/AE3 ! by IHC,Positive
Storage:	Store frozen tissue sections at -80°C.
Stability:	All frozen tissue sections are stable for 1 year from date of purchase if stored at -80°C without repeated freeze/thaws.

Product images:



4x Image



20x Image