

Product datasheet for **CS518985**

Frozen Tissue Sections, Stomach

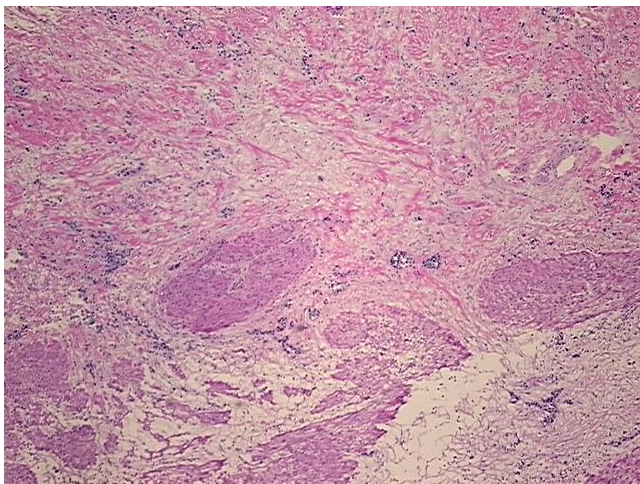
Product data:

Product Type:	Frozen Sections
Disease State:	Cancer
Diagnosis Category:	Stomach Cancer
Tissue:	Stomach
Frozen Sample ID:	FR5B33B0D3
Case ID:	CI0000008013
Tissue of Origin:	Stomach
Site of Finding:	Stomach
Appearance:	T
Sample Diagnosis (from Pathology Verification):	Adenocarcinoma of stomach, signet ring cell
Normal:	70%
Lesional:	0%
Tumor:	20%
Tumor Hypo/Acellular Stroma:	0%
Tumor Hypercellular Stroma:	10%
Necrosis:	0%
Pathology Verification notes from H&E review:	Tumor: may originate from the proximal stomach; Other Features/Comments: normal: 20% mucosa, 10% submucosa, 40% muscle
CASE Diagnosis (from medical center path report):	Adenocarcinoma of stomach, signet ring cell
Age:	71
Gender:	Male
Race:	White or Caucasian

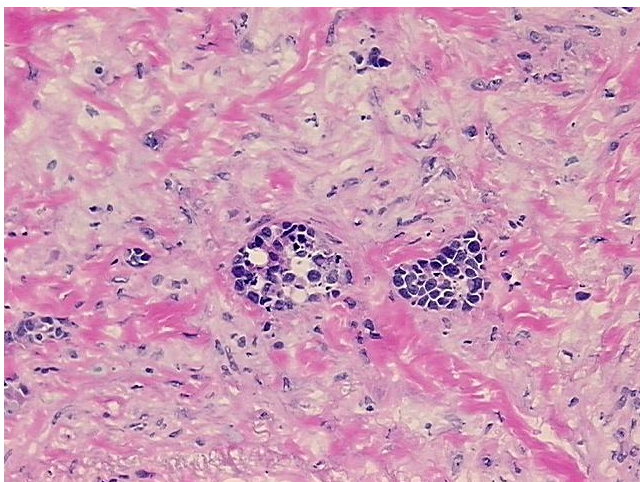


[View online »](#)

Tumor Grade:	AJCC G3: Poorly differentiated
Minimum Stage Grouping:	IIIB
T (Extent of Primary Tumor):	T3
N (Lymph node metastasis):	N2
M (Distant metastasis):	MX
Storage:	Store frozen tissue sections at -80°C.
Stability:	All frozen tissue sections are stable for 1 year from date of purchase if stored at -80°C without repeated freeze/thaws.

Product images:

4x Image



20x Image