

Product datasheet for **CS518785**

Frozen Tissue Sections, Myometrium

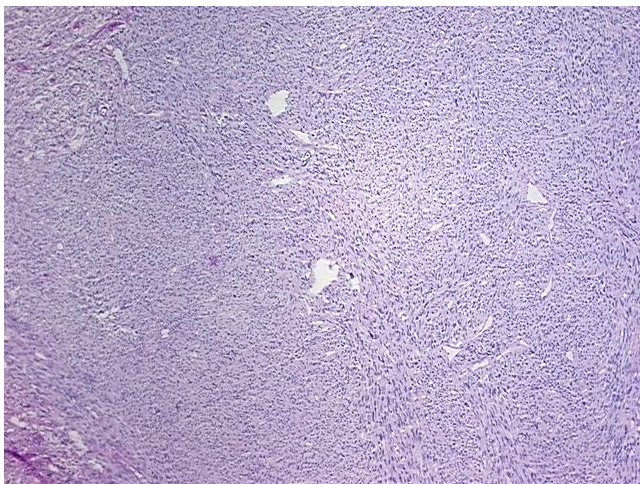
Product data:

Product Type:	Frozen Sections
Disease State:	Cancer
Diagnosis Category:	Sarcoma
Tissue:	Myometrium
Frozen Sample ID:	FR00020454
Case ID:	CI0000007976
Tissue of Origin:	Myometrium
Site of Finding:	Uterus
Appearance:	T
Sample Diagnosis (from Pathology Verification):	Leiomyosarcoma
Normal:	0%
Lesional:	0%
Tumor:	65%
Tumor Hypo/Acellular Stroma:	0%
Tumor Hypercellular Stroma:	0%
Necrosis:	35%
CASE Diagnosis (from medical center path report):	Leiomyosarcoma
Age:	56
Gender:	Female
Race:	White or Caucasian
Tumor Grade:	Not Reported

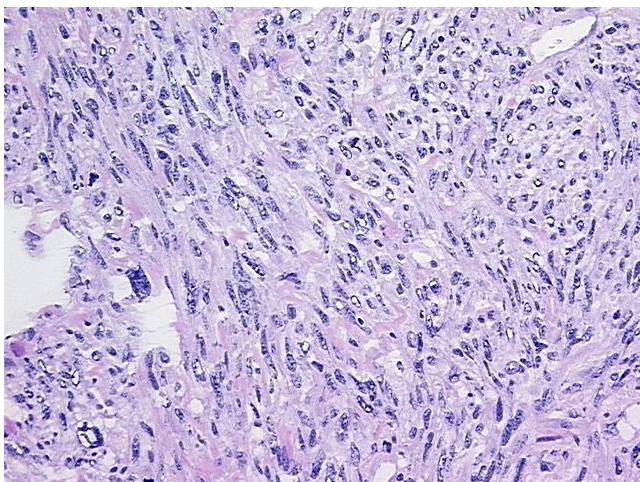


[View online »](#)

Minimum Stage Grouping:	IIIB
T (Extent of Primary Tumor):	T3b
N (Lymph node metastasis):	NX
M (Distant metastasis):	MX
Diagnostic Test Results:	MSA ~ Muscle Specific Actin, Positive, focal
Storage:	Store frozen tissue sections at -80°C.
Stability:	All frozen tissue sections are stable for 1 year from date of purchase if stored at -80°C without repeated freeze/thaws.

Product images:

4x Image



20x Image