

Product datasheet for CS518580

Frozen Tissue Sections, Liver

Product data:

| | |
|---|--|
| Product Type: | Frozen Sections |
| Disease State: | Other Disease |
| Diagnosis Category: | Hyperplasia |
| Tissue: | Liver |
| Frozen Sample ID: | FR5B3388D1 |
| Case ID: | CI0000007947 |
| Tissue of Origin: | Liver |
| Site of Finding: | Liver |
| Appearance: | L |
| Sample Diagnosis (from Pathology Verification): | Nodular hyperplasia of liver, focal |
| Normal: | 0% |
| Lesional: | 100% |
| Tumor: | 0% |
| Tumor Hypo/Acellular Stroma: | 0% |
| Tumor Hypercellular Stroma: | 0% |
| Necrosis: | 0% |
| Pathology Verification notes from H&E review: | Non Tumor Structures: 95% Hepatocytes, 1% Fibrous septae, 4% Bile ducts; Other Features/Comments: Sample area: 6 mm x 6 mm |
| CASE Diagnosis (from medical center path report): | Nodular hyperplasia of liver, focal |
| Age: | 39 |
| Gender: | Female |
| Race: | White or Caucasian |

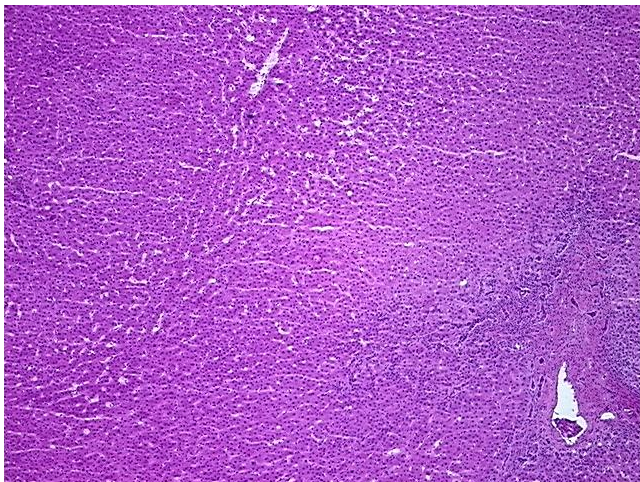


[View online »](#)

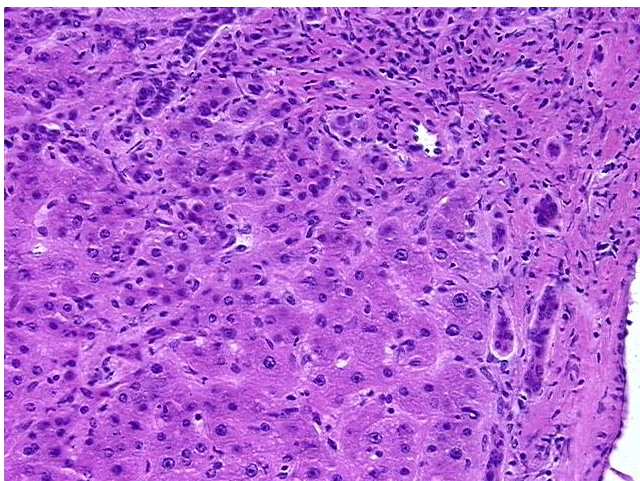
Storage: Store frozen tissue sections at -80°C.

Stability: All frozen tissue sections are stable for 1 year from date of purchase if stored at -80°C without repeated freeze/thaws.

Product images:



4x Image



20x Image