

Product datasheet for **CS518575**

Frozen Tissue Sections, Liver

Product data:

Product Type:	Frozen Sections
Disease State:	Other Disease
Diagnosis Category:	Hyperplasia
Tissue:	Liver
Frozen Sample ID:	FR5B3388CB
Case ID:	CI0000007947
Tissue of Origin:	Liver
Site of Finding:	Liver
Appearance:	L
Sample Diagnosis (from Pathology Verification):	Nodular hyperplasia of liver, focal
Normal:	0%
Lesional:	100%
Tumor:	0%
Tumor Hypo/Acellular Stroma:	0%
Tumor Hypercellular Stroma:	0%
Necrosis:	0%
Pathology Verification notes from H&E review:	Non Tumor Structures: 95% Hepatocytes, 4% Fibrous septae;, 1% Bile ducts; Other Features/Comments: Sample area: 7 mm x 3 mm
CASE Diagnosis (from medical center path report):	Nodular hyperplasia of liver, focal
Age:	39
Gender:	Female
Race:	White or Caucasian

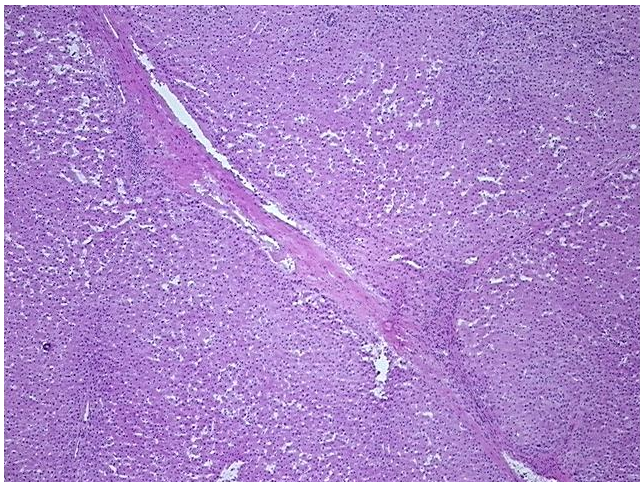


[View online »](#)

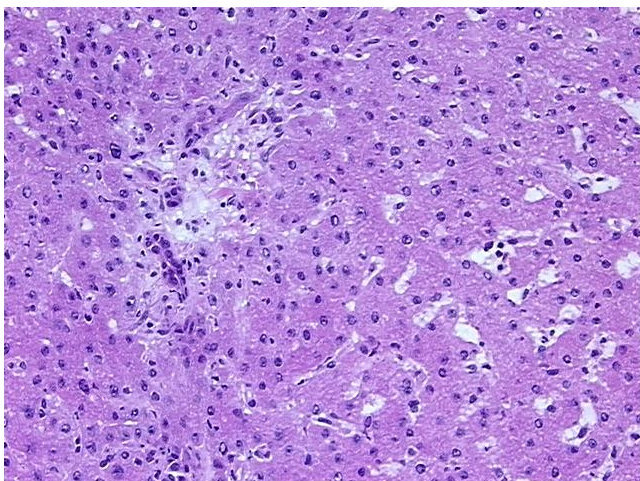
Storage: Store frozen tissue sections at -80°C.

Stability: All frozen tissue sections are stable for 1 year from date of purchase if stored at -80°C without repeated freeze/thaws.

Product images:



4x Image



20x Image