

Product datasheet for **CS517945**

Frozen Tissue Sections, Pleura

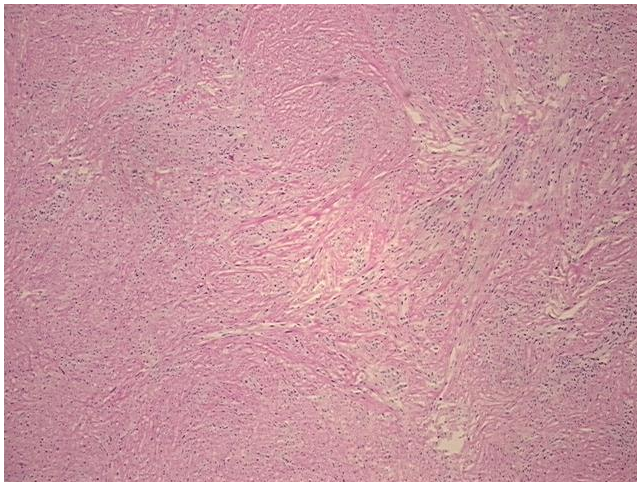
Product data:

Product Type:	Frozen Sections
Disease State:	Cancer
Diagnosis Category:	Mesothelioma
Tissue:	Lung
Frozen Sample ID:	FR0002081F
Case ID:	CI0000007889
Tissue of Origin:	Pleura
Site of Finding:	Lung
Appearance:	T
Sample Diagnosis (from Pathology Verification):	Mesothelioma of pleura
Normal:	0%
Lesional:	0%
Tumor:	65%
Tumor Hypo/Acellular Stroma:	35%
Tumor Hypercellular Stroma:	0%
Necrosis:	0%
Pathology Verification notes from H&E review:	Tumor Stroma (Hypo/Acellular): Fibrosis; Other Features/Comments: Pleural mesothelioma with extension along interlobular septa
CASE Diagnosis (from medical center path report):	Mesothelioma of pleura
Age:	53
Gender:	Male
Race:	White or Caucasian

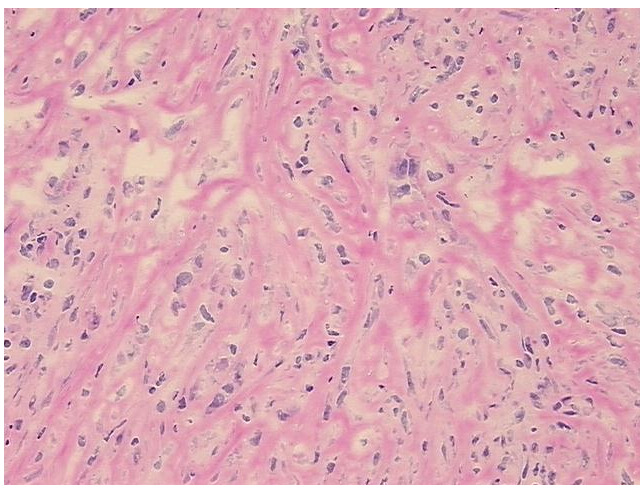


[View online »](#)

Tumor Grade:	Not Reported
Minimum Stage Grouping:	IV
T (Extent of Primary Tumor):	T3
N (Lymph node metastasis):	N1
M (Distant metastasis):	M1
Diagnostic Test Results:	Cytokeratins (5 and 6) ~ CK5,6 ! by IHC,Reported as Performed or Reviewed; Epithelial specific antigen ~ BerEP4 ~ MOC31 ! by IHC,Reported as Performed or Reviewed; Tumor associated glycoprotein-72 ~ TAG-72 ~ B72.3 antigen ! by IHC,Reported as Pe
Storage:	Store frozen tissue sections at -80°C.
Stability:	All frozen tissue sections are stable for 1 year from date of purchase if stored at -80°C without repeated freeze/thaws.

Product images:

4x Image



20x Image