

Product datasheet for CS517774

Frozen Tissue Sections, Lung

Product data:

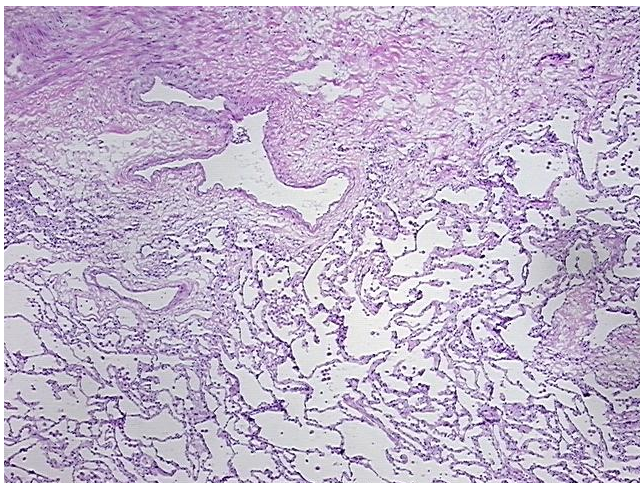
| | |
|---|--|
| Product Type: | Frozen Sections |
| Disease State: | Other Disease |
| Diagnosis Category: | Pneumonia |
| Tissue: | Lung |
| Frozen Sample ID: | FR5B33AC82 |
| Case ID: | CI0000007848 |
| Tissue of Origin: | Lung |
| Site of Finding: | Lung |
| Appearance: | L |
| Sample Diagnosis (from Pathology Verification): | Pneumonia, organizing |
| Normal: | 0% |
| Lesional: | 100% |
| Tumor: | 0% |
| Tumor Hypo/Acellular Stroma: | 0% |
| Tumor Hypercellular Stroma: | 0% |
| Necrosis: | 0% |
| Pathology Verification notes from H&E review: | 75% alveoli, 5% bronchioles, 20% fibrovascular septa; 1+ MAC, 1+ MIX |
| CASE Diagnosis (from medical center path report): | Adenocarcinoma of lung |
| Age: | 64 |
| Gender: | Female |
| Race: | White or Caucasian |



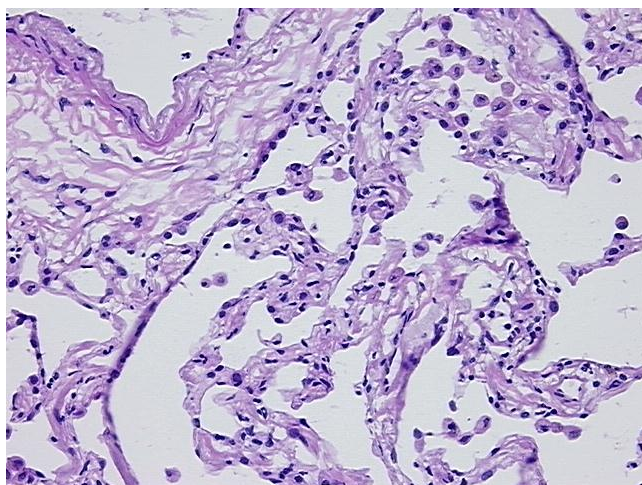
[View online »](#)

| | |
|-------------------------------------|--|
| Tumor Grade: | AJCC G3: Poorly differentiated |
| Minimum Stage Grouping: | IA |
| T (Extent of Primary Tumor): | T1 |
| N (Lymph node metastasis): | N0 |
| M (Distant metastasis): | MX |
| Diagnostic Test Results: | ERBB1 ~ EGFR ~ Epidermal growth factor receptor ! by IHC,Positive; HER2 ~ ERBB2 ~ Neu ! by IHC,Negative |
| Storage: | Store frozen tissue sections at -80°C. |
| Stability: | All frozen tissue sections are stable for 1 year from date of purchase if stored at -80°C without repeated freeze/thaws. |

Product images:



4x Image



20x Image