

Product datasheet for **CS517479**

Frozen Tissue Sections, Breast

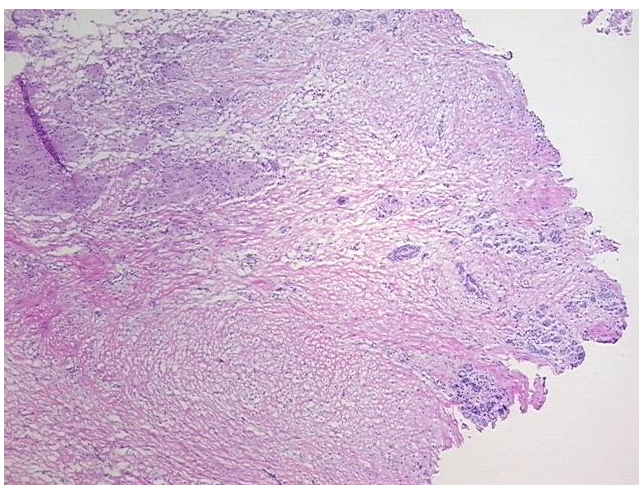
Product data:

Product Type:	Frozen Sections
Disease State:	Other Disease
Diagnosis Category:	Foreign Body Reaction
Tissue:	Breast
Frozen Sample ID:	FR00025E77
Case ID:	CI0000007787
Tissue of Origin:	Breast
Site of Finding:	Breast
Appearance:	L
Sample Diagnosis (from Pathology Verification):	Foreign body reaction
Normal:	70%
Lesional:	30%
Tumor:	0%
Tumor Hypo/Acellular Stroma:	0%
Tumor Hypercellular Stroma:	0%
Necrosis:	0%
Pathology Verification notes from H&E review:	normal: 20% epithelium, 60% fibrotic stroma, 20% fat
CASE Diagnosis (from medical center path report):	Adenocarcinoma of breast, ductal
Age:	49
Gender:	Female
Race:	White or Caucasian

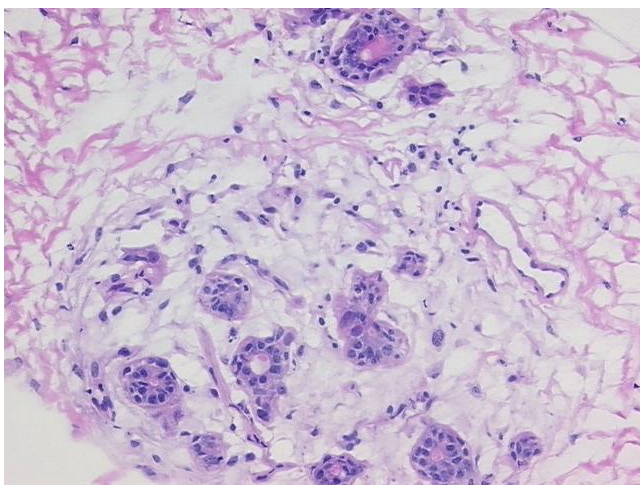


[View online »](#)

Tumor Grade:	Not Reported
Minimum Stage Grouping:	IIA
T (Extent of Primary Tumor):	T1c
N (Lymph node metastasis):	N1mi
M (Distant metastasis):	MX
Diagnostic Test Results:	Calponin,Negative; Smooth muscle myosin ! by IHC,Negative; Estrogen receptor ~ ER ! by IHC,Positive; HER2 ~ ERBB2 ~ Neu ! by IHC,Negative; MSA ~ Muscle Specific Actin,Negative; p63 ~ p53 homolog ! by IHC,Negative
Storage:	Store frozen tissue sections at -80°C.
Stability:	All frozen tissue sections are stable for 1 year from date of purchase if stored at -80°C without repeated freeze/thaws.

Product images:

4x Image



20x Image