

Product datasheet for **CS517415**

Frozen Tissue Sections, Colon

Product data:

| | |
|---|-------------------------------------|
| Product Type: | Frozen Sections |
| Disease State: | Other Disease |
| Diagnosis Category: | Inflammatory Bowel Disease (IBD) |
| Tissue: | Colon |
| Frozen Sample ID: | FR5B33C5D6 |
| Case ID: | CI0000007772 |
| Tissue of Origin: | Colon |
| Site of Finding: | Colon |
| Appearance: | L |
| Sample Diagnosis (from Pathology Verification): | Colitis, ulcerative, chronic active |
| Normal: | 90% |
| Lesional: | 10% |
| Tumor: | 0% |
| Tumor Hypo/Acellular Stroma: | 0% |
| Tumor Hypercellular Stroma: | 0% |
| Necrosis: | 0% |
| Pathology Verification notes from H&E review: | normal: 20% submucosa, 80% muscle |
| CASE Diagnosis (from medical center path report): | Colitis, ulcerative, chronic active |
| Age: | 42 |
| Gender: | Male |
| Race: | White or Caucasian |

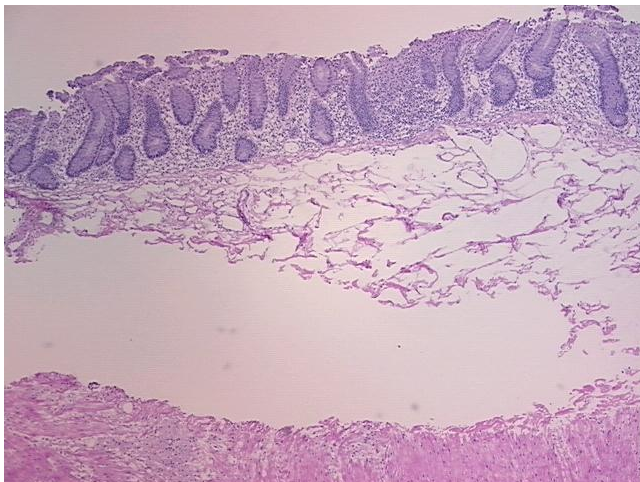


[View online »](#)

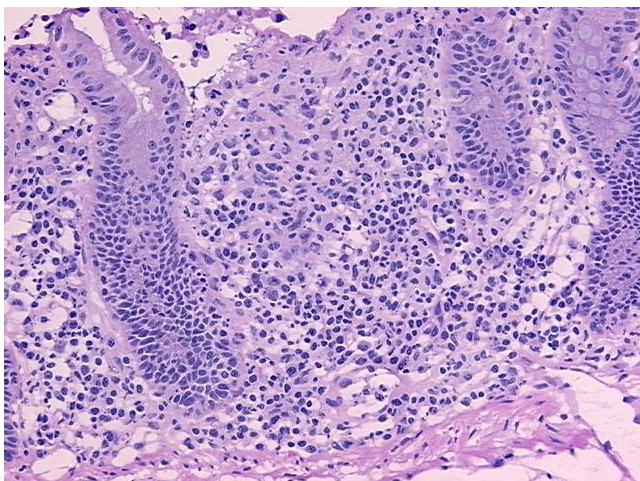
Storage: Store frozen tissue sections at -80°C.

Stability: All frozen tissue sections are stable for 1 year from date of purchase if stored at -80°C without repeated freeze/thaws.

Product images:



4x Image



20x Image