

## Product datasheet for **CS517413**

### Frozen Tissue Sections, Colon

#### Product data:

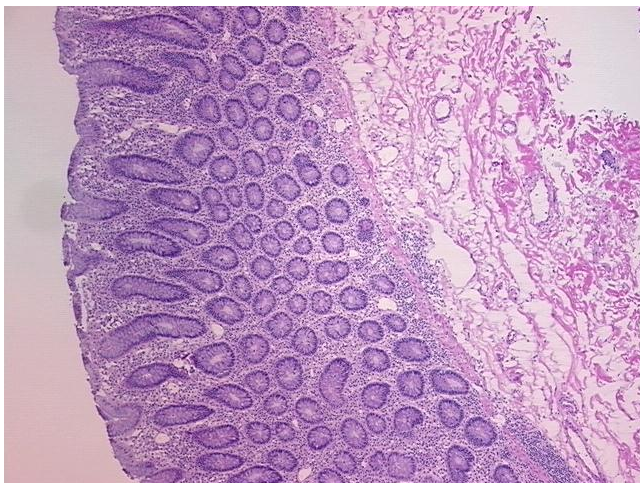
|   |  |
|---|--|
| Product Type:                                     | Frozen Sections                        |
| Disease State:                                    | Other Disease                          |
| Diagnosis Category:                               | Inflammatory Bowel Disease (IBD)       |
| Tissue:   | Colon                                  |
| Frozen Sample ID:                                 | FR5B33C5D3                             |
| Case ID:  | CI0000007772                           |
| Tissue of Origin:                                 | Colon                                  |
| Site of Finding:                                  | Colon                                  |
| Appearance:                                       | L                                      |
| Sample Diagnosis (from Pathology Verification):   | Colitis, ulcerative, chronic active    |
| Normal:   | 45%                                    |
| Lesional:   | 55%                                    |
| Tumor:  | 0%                                     |
| Tumor Hypo/Acellular Stroma:                      | 0%                                     |
| Tumor Hypercellular Stroma:                       | 0%                                     |
| Necrosis:   | 0%                                     |
| CASE Diagnosis (from medical center path report): | Colitis, ulcerative, chronic active    |
| Age:  | 42                                     |
| Gender:   | Male                                   |
| Race:   | White or Caucasian                     |
| Storage:  | Store frozen tissue sections at -80°C. |



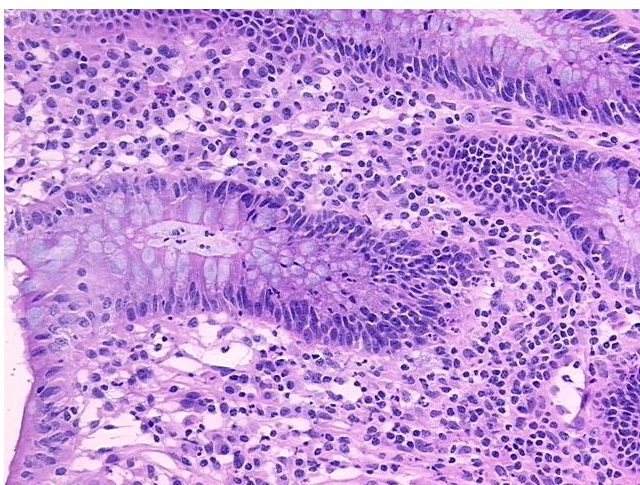
[View online »](#)

**Stability:** All frozen tissue sections are stable for 1 year from date of purchase if stored at -80°C without repeated freeze/thaws.

**Product images:**



4x Image



20x Image