

## Product datasheet for CS517360

### Frozen Tissue Sections, Esophagus

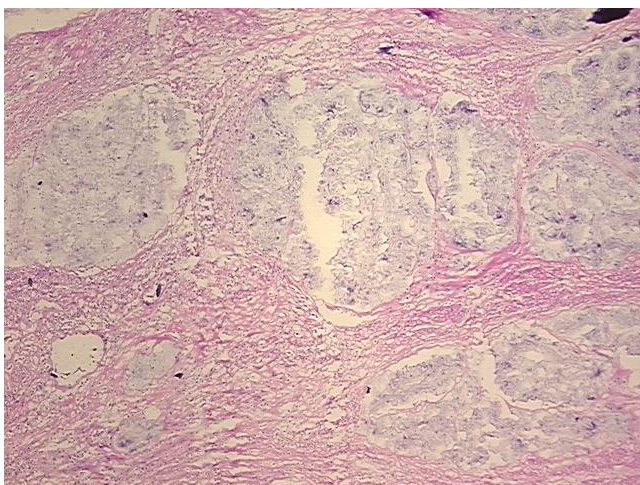
#### Product data:

|   |  |
|---|--|
| Product Type:                                     | Frozen Sections  |
| Disease State:                                    | Other Disease  |
| Diagnosis Category:                               | Treatment Effect   |
| Tissue:   | Esophagus  |
| Frozen Sample ID:                                 | FR00025C0F   |
| Case ID:  | CI0000007762   |
| Tissue of Origin:                                 | Esophagus  |
| Site of Finding:                                  | Esophagus  |
| Appearance:                                       | L  |
| Sample Diagnosis (from Pathology Verification):   | Radiation effect   |
| Normal:   | 0%   |
| Lesional:   | 100%   |
| Tumor:  | 0%   |
| Tumor Hypo/Acellular Stroma:                      | 0%   |
| Tumor Hypercellular Stroma:                       | 0%   |
| Necrosis:   | 0%   |
| Pathology Verification notes from H&E review:     | Non Tumor Structures: 90% large mucin pools, 10% Muscle; Other Features/Comments: no tumor cells noted |
| CASE Diagnosis (from medical center path report): | Adenocarcinoma of esophagus  |
| Age:  | 53   |
| Gender:   | Male   |
| Race:   | White or Caucasian   |

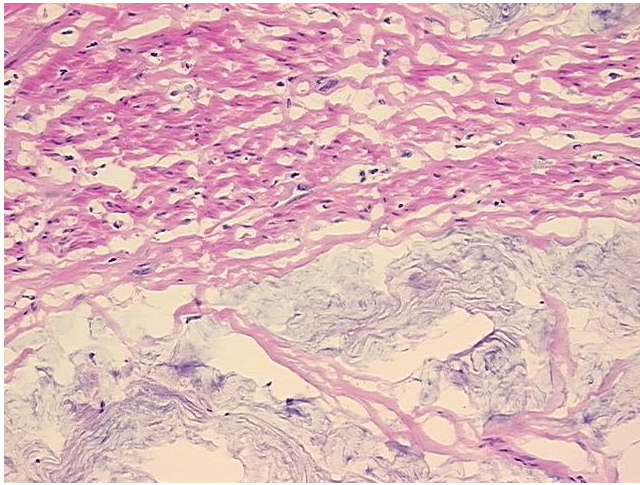


[View online »](#)

|                              |  |
|------------------------------|--|
| Tumor Grade:                 | Not Reported   |
| Minimum Stage Grouping:      | IIB  |
| T (Extent of Primary Tumor): | TX   |
| N (Lymph node metastasis):   | N1   |
| M (Distant metastasis):      | MX   |
| Diagnostic Test Results:     | Cytokeratin AE1/AE3 ~ AE1/AE3 ! by IHC,Negative  |
| Storage:                     | Store frozen tissue sections at -80°C.   |
| Stability:                   | All frozen tissue sections are stable for 1 year from date of purchase if stored at -80°C without repeated freeze/thaws. |

**Product images:**

4x Image



20x Image