

Product datasheet for CS517157

Frozen Tissue Sections, Duodenum

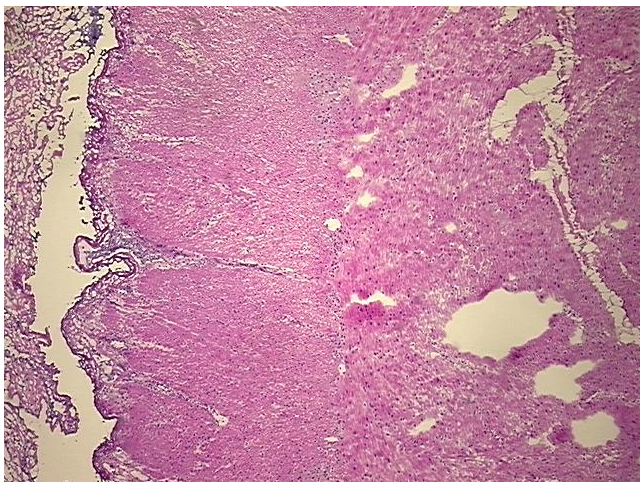
Product data:

Product Type:	Frozen Sections
Disease State:	Other Disease
Diagnosis Category:	Serositis
Tissue:	Small intestine
Frozen Sample ID:	FR5B337A6D
Case ID:	CI0000007678
Tissue of Origin:	Duodenum
Site of Finding:	Duodenum
Appearance:	L
Sample Diagnosis (from Pathology Verification):	Serositis
Normal:	80%
Lesional:	10%
Tumor:	0%
Tumor Hypo/Acellular Stroma:	0%
Tumor Hypercellular Stroma:	0%
Necrosis:	10%
Pathology Verification notes from H&E review:	Inflammation: Moderate Mixed inflammatory infiltrate; Non Tumor Structures: 60% Mucosa, 10% Submucosa, 10% Serosa, 20% Muscle
CASE Diagnosis (from medical center path report):	Adenocarcinoma of pancreas, ductal
Age:	64
Gender:	Male
Race:	White or Caucasian

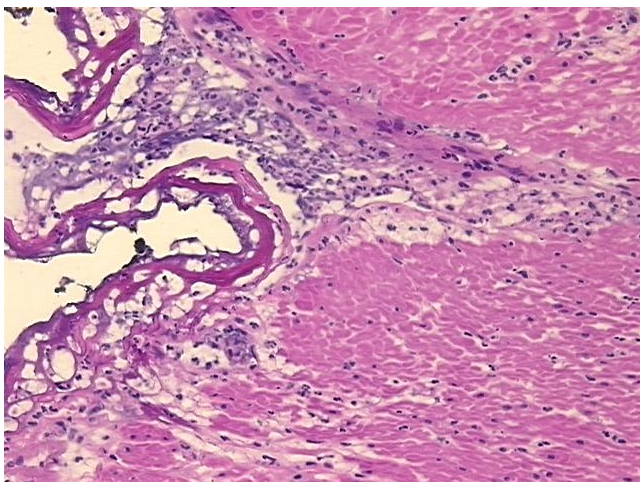


[View online »](#)

Tumor Grade:	AJCC G2: Moderately differentiated
Minimum Stage Grouping:	III
T (Extent of Primary Tumor):	T3
N (Lymph node metastasis):	N1b
M (Distant metastasis):	MX
Storage:	Store frozen tissue sections at -80°C.
Stability:	All frozen tissue sections are stable for 1 year from date of purchase if stored at -80°C without repeated freeze/thaws.

Product images:

4x Image



20x Image