

## Product datasheet for **CS516945**

### Frozen Tissue Sections, Lung

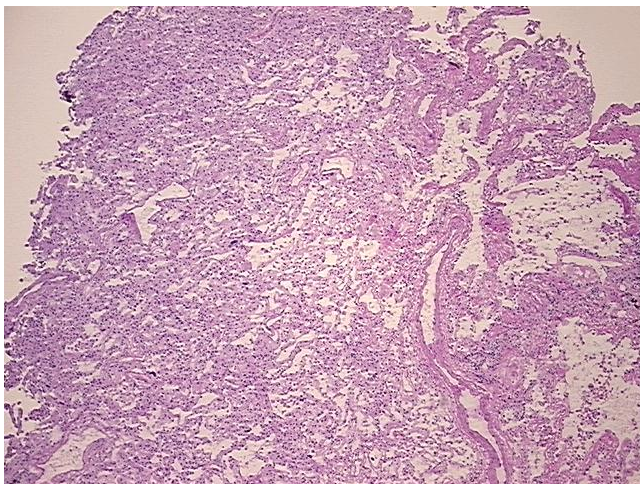
#### Product data:

|   |   |
|---|---|
| Product Type:                                     | Frozen Sections   |
| Disease State:                                    | Other Disease   |
| Diagnosis Category:                               | Pneumonia   |
| Tissue:   | Lung  |
| Frozen Sample ID:                                 | FR5B33C551  |
| Case ID:  | CI0000007640  |
| Tissue of Origin:                                 | Lung  |
| Site of Finding:                                  | Lung  |
| Appearance:                                       | L   |
| Sample Diagnosis (from Pathology Verification):   | Bronchiolitis obliterans organizing pneumonia   |
| Normal:   | 0%  |
| Lesional:   | 100%  |
| Tumor:  | 0%  |
| Tumor Hypo/Acellular Stroma:                      | 0%  |
| Tumor Hypercellular Stroma:                       | 0%  |
| Necrosis:   | 0%  |
| Pathology Verification notes from H&E review:     | lesion: organizing pneumonia with inflammation, 2+ MAC, 1+ LYM; no residual normal architecture |
| CASE Diagnosis (from medical center path report): | Adenocarcinoma of lung  |
| Age:  | 79  |
| Gender:   | Male  |
| Race:   | White or Caucasian  |

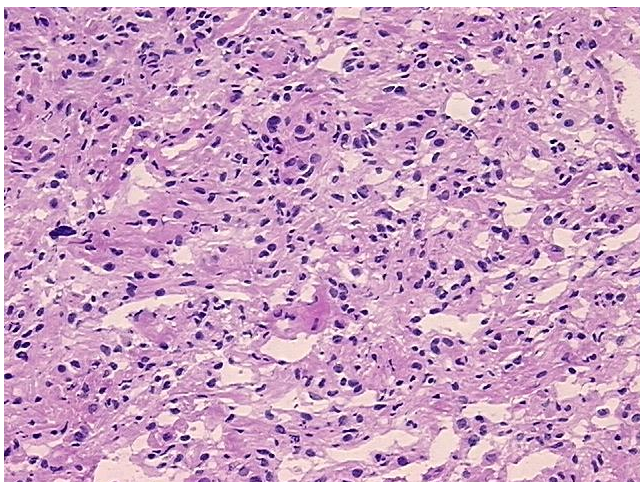


[View online »](#)

|                              |  |
|------------------------------|--|
| Tumor Grade:                 | AJCC G2: Moderately differentiated   |
| Minimum Stage Grouping:      | IA   |
| T (Extent of Primary Tumor): | T1   |
| N (Lymph node metastasis):   | N0   |
| M (Distant metastasis):      | MX   |
| Storage:                     | Store frozen tissue sections at -80°C.   |
| Stability:                   | All frozen tissue sections are stable for 1 year from date of purchase if stored at -80°C without repeated freeze/thaws. |

**Product images:**

4x Image



20x Image