

Product datasheet for CS516933

Frozen Tissue Sections, Breast

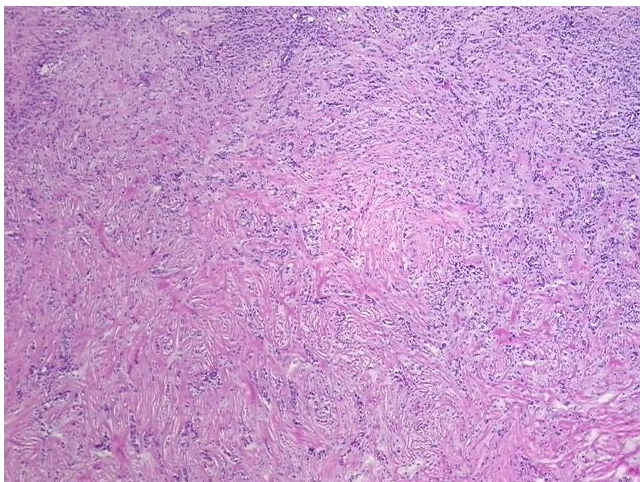
Product data:

| | |
|---------------------------------------------------|------------------------------------------------------------------------------|
| Product Type: | Frozen Sections |
| Disease State: | Cancer |
| Diagnosis Category: | Breast Cancer |
| Tissue: | Breast |
| Frozen Sample ID: | FR000221B8 |
| Case ID: | CI0000007635 |
| Tissue of Origin: | Breast |
| Site of Finding: | Breast |
| Appearance: | T |
| Sample Diagnosis (from Pathology Verification): | Adenocarcinoma of breast, ductal, lobular |
| Normal: | 10% |
| Lesional: | 0% |
| Tumor: | 45% |
| Tumor Hypo/Acellular Stroma: | 45% |
| Tumor Hypercellular Stroma: | 0% |
| Necrosis: | 0% |
| CASE Diagnosis (from medical center path report): | Adenocarcinoma of breast, ductal, lobular |
| Age: | 33 |
| Gender: | Female |
| Race: | White or Caucasian |
| Tumor Grade: | Nottingham G2: 6-7 points Intermediate combined grade (moderately favorable) |

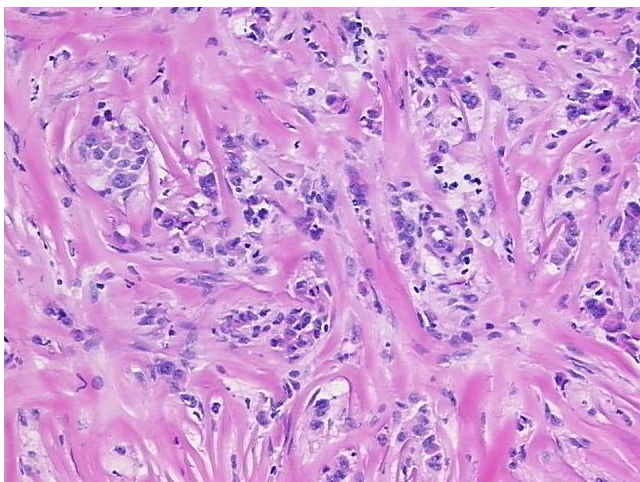


[View online »](#)

| | |
|------------------------------|--------------------------------------------------------------------------------------------------------------------------|
| Minimum Stage Grouping: | IIA |
| T (Extent of Primary Tumor): | T1 |
| N (Lymph node metastasis): | N1 |
| M (Distant metastasis): | MX |
| Diagnostic Test Results: | Estrogen receptor ~ ER ! by IHC,Positive; HER2 ~ ERBB2 ~ Neu ! by IHC,Negative |
| Storage: | Store frozen tissue sections at -80°C. |
| Stability: | All frozen tissue sections are stable for 1 year from date of purchase if stored at -80°C without repeated freeze/thaws. |

Product images:

4x Image



20x Image