

Product datasheet for **CS516687**

Frozen Tissue Sections, Ovary: left

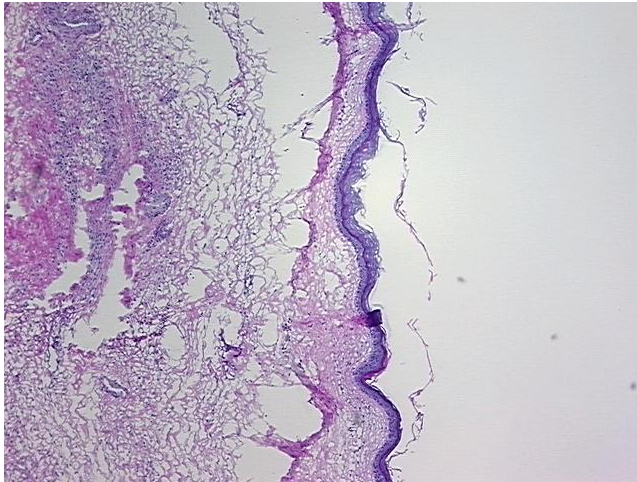
Product data:

Product Type:	Frozen Sections
Disease State:	Other Disease
Diagnosis Category:	Teratoma
Tissue:	Ovary
Frozen Sample ID:	FR00021ED6
Case ID:	CI0000007582
Tissue of Origin:	Ovary: left
Site of Finding:	Ovary: left
Appearance:	T
Sample Diagnosis (from Pathology Verification):	Teratoma of ovary, mature, cystic
Normal:	70%
Lesional:	0%
Tumor:	20%
Tumor Hypo/Acellular Stroma:	10%
Tumor Hypercellular Stroma:	0%
Necrosis:	0%
Pathology Verification notes from H&E review:	Non Tumor Structures: 100% Ovarian stroma
CASE Diagnosis (from medical center path report):	Teratoma of ovary, mature, cystic
Age:	69
Gender:	Female
Race:	White or Caucasian

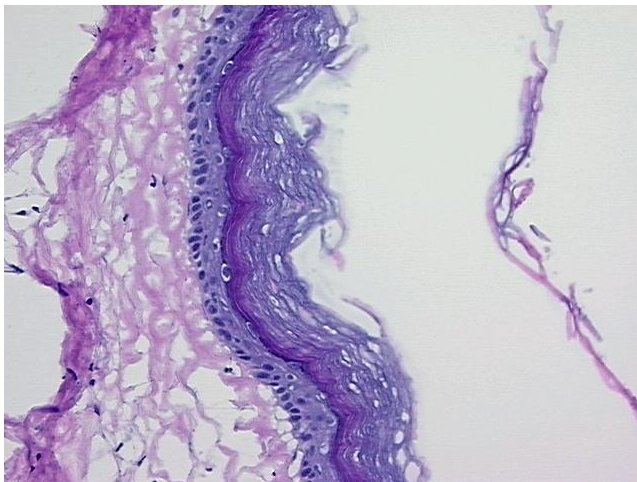


[View online »](#)

Tumor Grade:	Not Reported
Minimum Stage Grouping:	Not Reported
T (Extent of Primary Tumor):	Not Reported
N (Lymph node metastasis):	Not Reported
M (Distant metastasis):	Not Reported
Storage:	Store frozen tissue sections at -80°C.
Stability:	All frozen tissue sections are stable for 1 year from date of purchase if stored at -80°C without repeated freeze/thaws.

Product images:

4x Image



20x Image