

Product datasheet for **CS516257**

Frozen Tissue Sections, Breast

Product data:

Product Type:	Frozen Sections
Disease State:	Other Disease
Diagnosis Category:	Fibrocystic Breast
Tissue:	Breast
Frozen Sample ID:	FR5B339E95
Case ID:	CI0000007498
Tissue of Origin:	Breast
Site of Finding:	Breast
Appearance:	L
Sample Diagnosis (from Pathology Verification):	Fibrocystic breast disease
Normal:	35%
Lesional:	65%
Tumor:	0%
Tumor Hypo/Acellular Stroma:	0%
Tumor Hypercellular Stroma:	0%
Necrosis:	0%
Pathology Verification notes from H&E review:	Lesion (65%): Fibrocystic breast disease 100%; Non Tumor Structures: 65% Glandular epithelium, 20% Stroma, 15% Adipose tissue
CASE Diagnosis (from medical center path report):	Ductal hyperplasia of breast
Age:	44
Gender:	Female
Race:	White or Caucasian

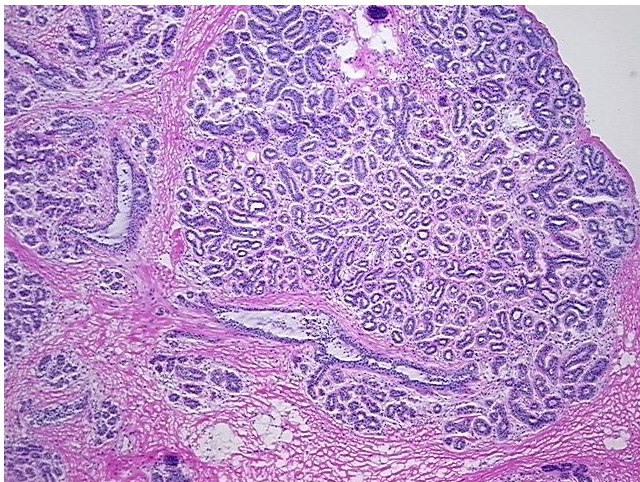


[View online »](#)

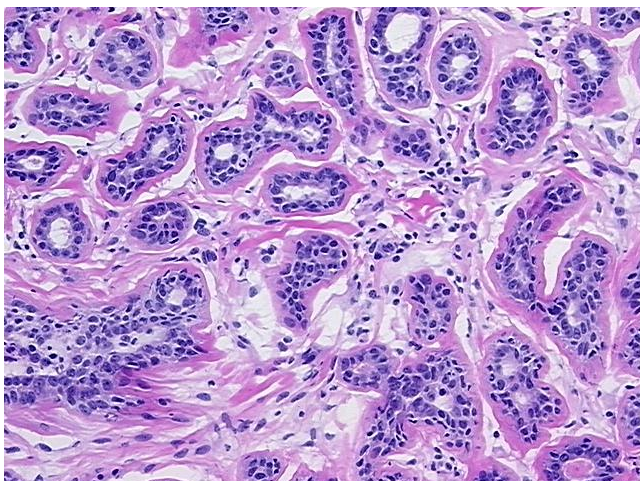
Storage: Store frozen tissue sections at -80°C.

Stability: All frozen tissue sections are stable for 1 year from date of purchase if stored at -80°C without repeated freeze/thaws.

Product images:



4x Image



20x Image