

Product datasheet for **CS515898**

Frozen Tissue Sections, Colon: right

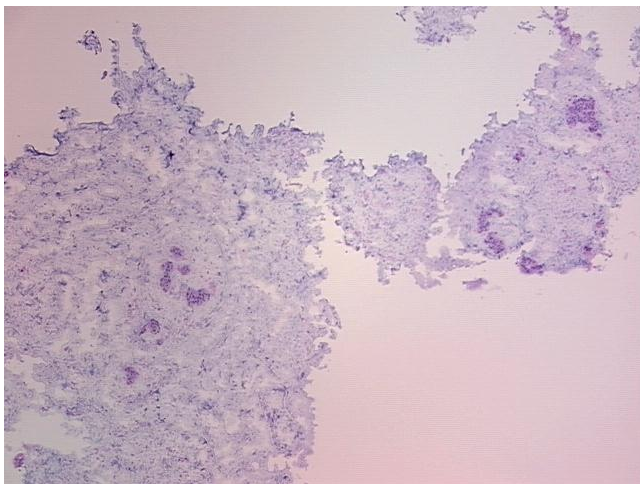
Product data:

Product Type:	Frozen Sections
Disease State:	Cancer
Diagnosis Category:	Colorectal Cancer
Tissue:	Colon
Frozen Sample ID:	FR5B33A065
Case ID:	CI0000007431
Tissue of Origin:	Colon: right
Site of Finding:	Lymph node
Appearance:	T
Sample Diagnosis (from Pathology Verification):	Adenocarcinoma of colon, metastatic
Normal:	0%
Lesional:	0%
Tumor:	5%
Tumor Hypo/Acellular Stroma:	95%
Tumor Hypercellular Stroma:	0%
Necrosis:	0%
Pathology Verification notes from H&E review:	tumor stroma contains mucin and fibroblasts
CASE Diagnosis (from medical center path report):	Adenocarcinoma of colon, mucinous, metastatic
Age:	73
Gender:	Female
Race:	White or Caucasian

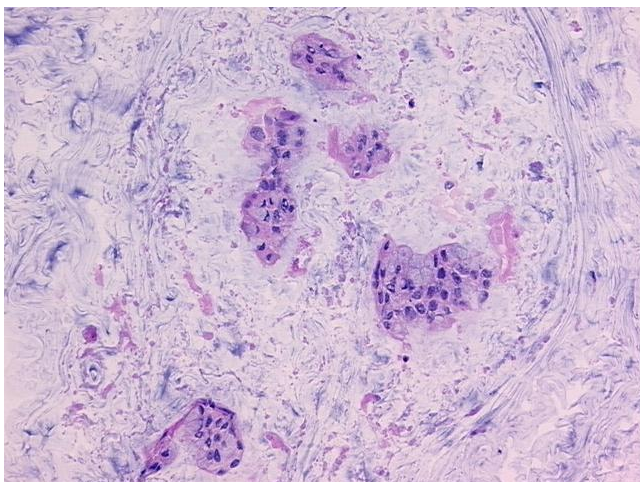


[View online »](#)

Tumor Grade:	Not Reported
Minimum Stage Grouping:	IIIA
T (Extent of Primary Tumor):	TX
N (Lymph node metastasis):	N1
M (Distant metastasis):	MX
Storage:	Store frozen tissue sections at -80°C.
Stability:	All frozen tissue sections are stable for 1 year from date of purchase if stored at -80°C without repeated freeze/thaws.

Product images:

4x Image



20x Image