

Product datasheet for **CS515701**

Frozen Tissue Sections, Aortic valve

Product data:

| | |
|---|--------------------------------------|
| Product Type: | Frozen Sections |
| Disease State: | Other Disease |
| Diagnosis Category: | Heart Valve Disorder |
| Tissue: | Aortic valve |
| Frozen Sample ID: | FR0002472D |
| Case ID: | CI0000007382 |
| Tissue of Origin: | Aortic valve |
| Site of Finding: | Aortic valve |
| Appearance: | L |
| Sample Diagnosis (from Pathology Verification): | Myxoid degeneration of cardiac valve |
| Normal: | 0% |
| Lesional: | 100% |
| Tumor: | 0% |
| Tumor Hypo/Acellular Stroma: | 0% |
| Tumor Hypercellular Stroma: | 0% |
| Necrosis: | 0% |
| Pathology Verification notes from H&E review: | calcified |
| CASE Diagnosis (from medical center path report): | Heart valve disorder |
| Age: | 63 |
| Gender: | Male |
| Race: | White or Caucasian |

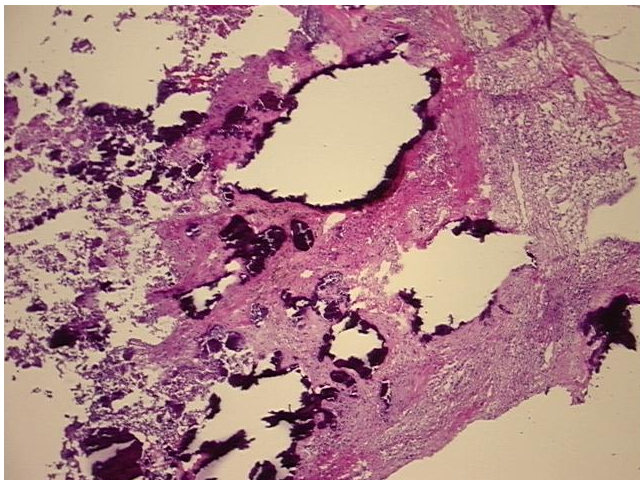


[View online »](#)

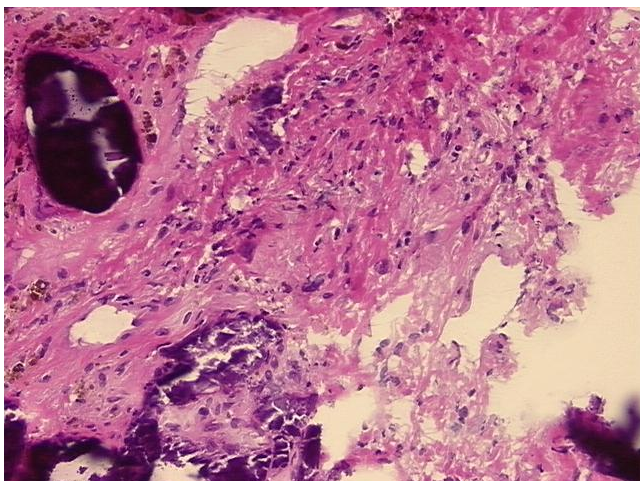
Storage: Store frozen tissue sections at -80°C.

Stability: All frozen tissue sections are stable for 1 year from date of purchase if stored at -80°C without repeated freeze/thaws.

Product images:



4x Image



20x Image