

Product datasheet for **CS515466**

Frozen Tissue Sections, Peripheral nerve

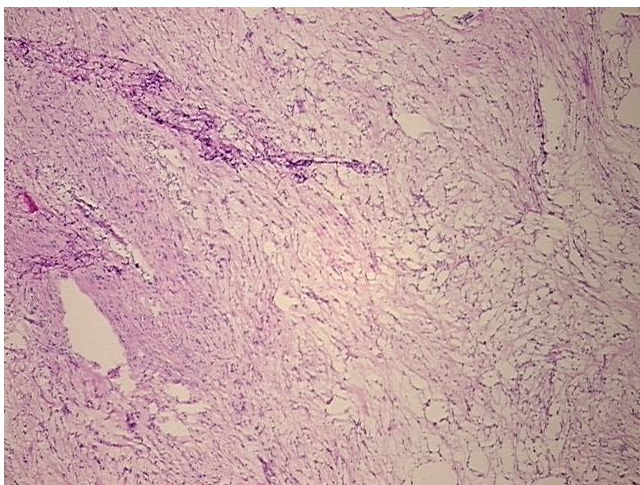
Product data:

Product Type:	Frozen Sections
Disease State:	Other Disease
Diagnosis Category:	Benign Tumors
Tissue:	Nerve
Frozen Sample ID:	FR0002432C
Case ID:	CI0000007341
Tissue of Origin:	Peripheral nerve
Site of Finding:	Peripheral nerve
Appearance:	T
Sample Diagnosis (from Pathology Verification):	Schwannoma
Normal:	0%
Lesional:	0%
Tumor:	90%
Tumor Hypo/Acellular Stroma:	10%
Tumor Hypercellular Stroma:	0%
Necrosis:	0%
CASE Diagnosis (from medical center path report):	Schwannoma
Age:	54
Gender:	Female
Race:	White or Caucasian
Tumor Grade:	Not Reported

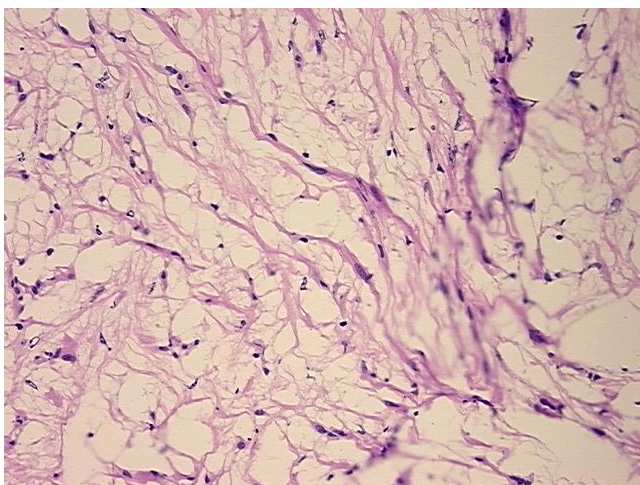


[View online »](#)

Minimum Stage Grouping:	Not Reported
T (Extent of Primary Tumor):	Not Reported
N (Lymph node metastasis):	Not Reported
M (Distant metastasis):	Not Reported
Diagnostic Test Results:	Smooth muscle actin ~ SMA ~ Alpha-SMA ! by IHC,Negative; Vimentin ~ VIM ! by IHC,Positive; S100 protein,Positive; Desmin ! by IHC,Negative; CD34 ~ HPCA ! by IHC,Negative
Storage:	Store frozen tissue sections at -80°C.
Stability:	All frozen tissue sections are stable for 1 year from date of purchase if stored at -80°C without repeated freeze/thaws.

Product images:

4x Image



20x Image