

Product datasheet for **CS514618**

Frozen Tissue Sections, Lung

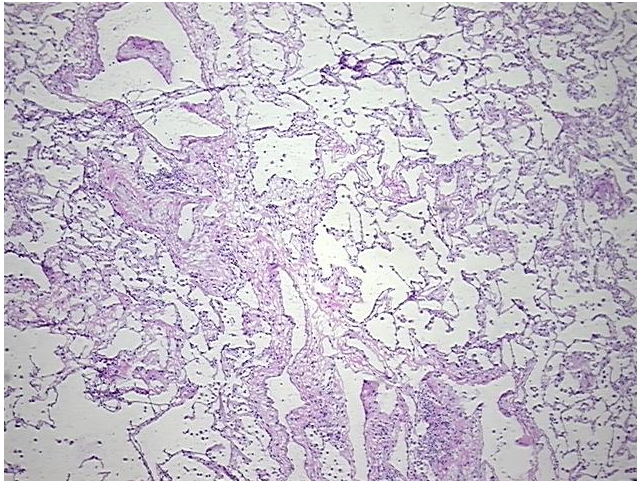
Product data:

Product Type:	Frozen Sections
Disease State:	Other Disease
Diagnosis Category:	Inflammation (various)
Tissue:	Lung
Frozen Sample ID:	FR5B33EB51
Case ID:	CI0000007185
Tissue of Origin:	Lung
Site of Finding:	Lung
Appearance:	L
Sample Diagnosis (from Pathology Verification):	Pneumonitis, interstitial
Normal:	85%
Lesional:	15%
Tumor:	0%
Tumor Hypo/Acellular Stroma:	0%
Tumor Hypercellular Stroma:	0%
Necrosis:	0%
Pathology Verification notes from H&E review:	Non Tumor Structures: 80% Alveoli, 5% Bronchioles, 15% Fibrovascular septa
CASE Diagnosis (from medical center path report):	Carcinoma of lung, non-small cell
Age:	45
Gender:	Female
Race:	White or Caucasian

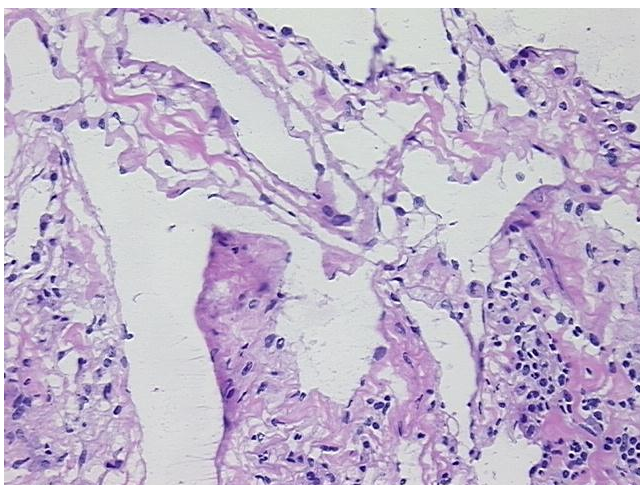


[View online »](#)

Tumor Grade:	AJCC G3: Poorly differentiated
Minimum Stage Grouping:	IIB
T (Extent of Primary Tumor):	T3
N (Lymph node metastasis):	N0
M (Distant metastasis):	MX
Diagnostic Test Results:	GMS ~ Grocott methenamine silver stain,Negative; Acid-fast bacteria ~ AFB ~ Ziehl-Neelsen acid fast,Negative
Storage:	Store frozen tissue sections at -80°C.
Stability:	All frozen tissue sections are stable for 1 year from date of purchase if stored at -80°C without repeated freeze/thaws.

Product images:

4x Image



20x Image