

Product datasheet for **CS514267**

Frozen Tissue Sections, Nose

Product data:

Product Type:	Frozen Sections
Disease State:	Other Disease
Diagnosis Category:	Sinusitis
Tissue:	Nose
Frozen Sample ID:	FR00021AF9
Case ID:	CI0000007106
Tissue of Origin:	Nose
Site of Finding:	Nose
Appearance:	L
Sample Diagnosis (from Pathology Verification):	Sinusitis, chronic
Normal:	0%
Lesional:	100%
Tumor:	0%
Tumor Hypo/Acellular Stroma:	0%
Tumor Hypercellular Stroma:	0%
Necrosis:	0%
Pathology Verification notes from H&E review:	10% mucosa, 90% lamina propria; 1+ MIX
CASE Diagnosis (from medical center path report):	Sinusitis, chronic
Age:	45
Gender:	Male
Race:	Not reported

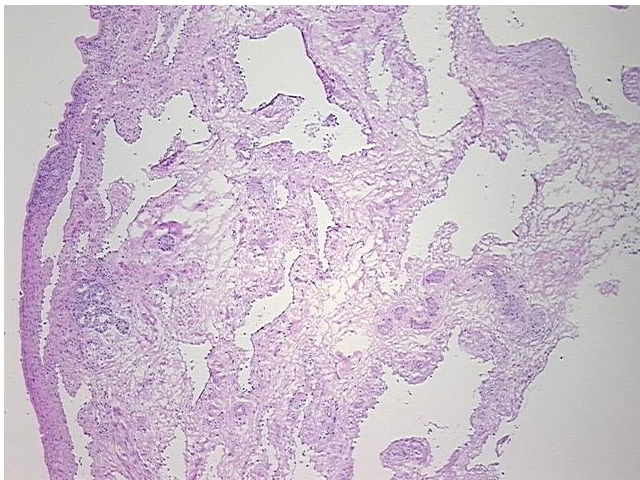


[View online »](#)

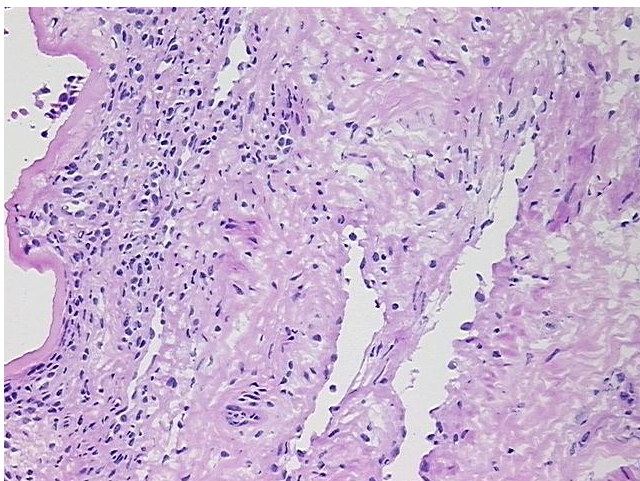
Storage: Store frozen tissue sections at -80°C.

Stability: All frozen tissue sections are stable for 1 year from date of purchase if stored at -80°C without repeated freeze/thaws.

Product images:



4x Image



20x Image