

## Product datasheet for CS513555

### Frozen Tissue Sections, Ovary: left

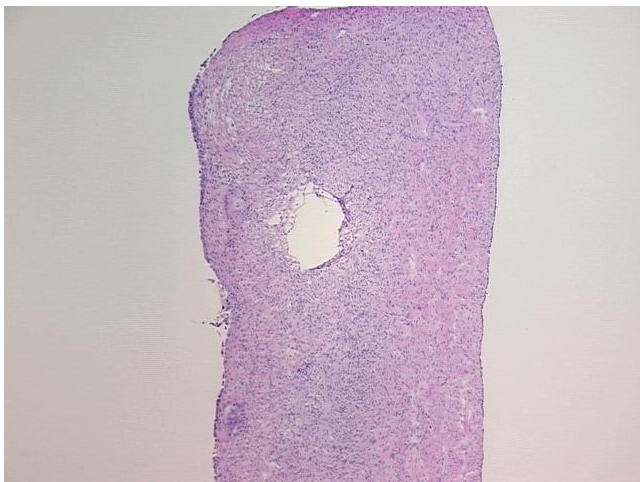
#### Product data:

Product Type:	Frozen Sections
Disease State:	Other Disease
Diagnosis Category:	Borderline Ovarian Tumor
Tissue:	Ovary
Frozen Sample ID:	FR0001FDCC
Case ID:	CI0000006981
Tissue of Origin:	Ovary: left
Site of Finding:	Ovary: left
Appearance:	T
Sample Diagnosis (from Pathology Verification):	Tumor of ovary, mucinous, borderline
Normal:	80%
Lesional:	0%
Tumor:	10%
Tumor Hypo/Acellular Stroma:	0%
Tumor Hypercellular Stroma:	10%
Necrosis:	0%
Pathology Verification notes from H&E review:	normal: 90% ovarian stroma, 10% hilar vessels
CASE Diagnosis (from medical center path report):	Tumor of ovary, mucinous, borderline
Age:	61
Gender:	Female
Race:	White or Caucasian

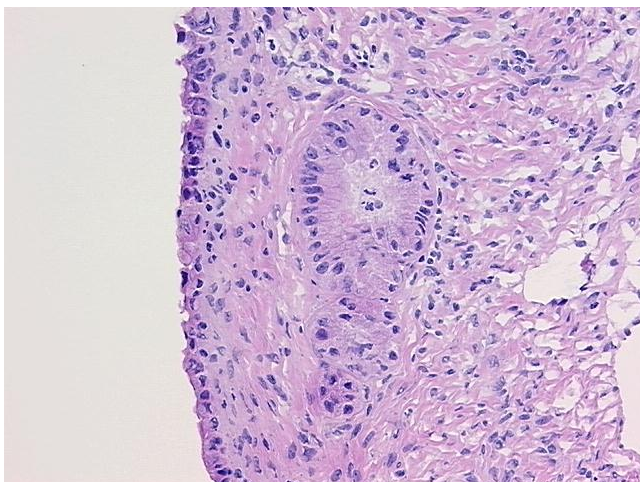


[View online »](#)

Tumor Grade:	AJCC GB: Borderline malignancy
Minimum Stage Grouping:	IA
T (Extent of Primary Tumor):	T1a
N (Lymph node metastasis):	NX
M (Distant metastasis):	MX
Storage:	Store frozen tissue sections at -80°C.
Stability:	All frozen tissue sections are stable for 1 year from date of purchase if stored at -80°C without repeated freeze/thaws.

**Product images:**

4x Image



20x Image