

Product datasheet for **CS513115**

Frozen Tissue Sections, Colon: sigmoid

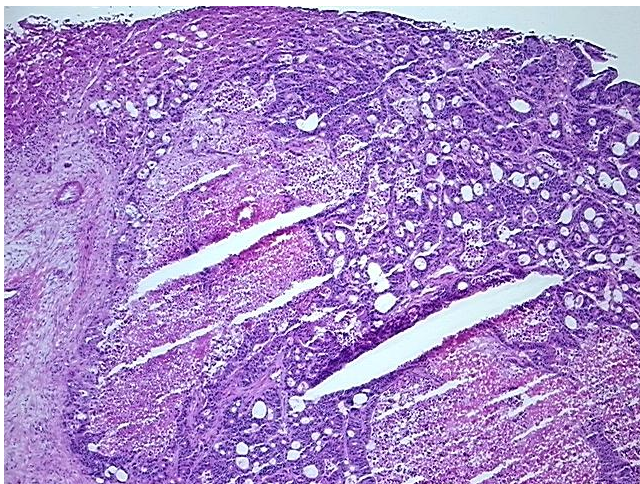
Product data:

Product Type:	Frozen Sections
Disease State:	Cancer
Diagnosis Category:	Colorectal Cancer
Tissue:	Colon
Frozen Sample ID:	FR0001F234
Case ID:	CI0000006940
Tissue of Origin:	Colon: sigmoid
Site of Finding:	Liver
Appearance:	T
Sample Diagnosis (from Pathology Verification):	Adenocarcinoma of colon, metastatic
Normal:	5%
Lesional:	0%
Tumor:	40%
Tumor Hypo/Acellular Stroma:	35%
Tumor Hypercellular Stroma:	0%
Necrosis:	20%
Pathology Verification notes from H&E review:	Tumor Stroma (Hypo/Acellular): Fibrosis; Other Features/Comments: Tumor area: 6 mm x 4 mm
CASE Diagnosis (from medical center path report):	Adenocarcinoma of colon, metastatic
Age:	51
Gender:	Female
Race:	White or Caucasian

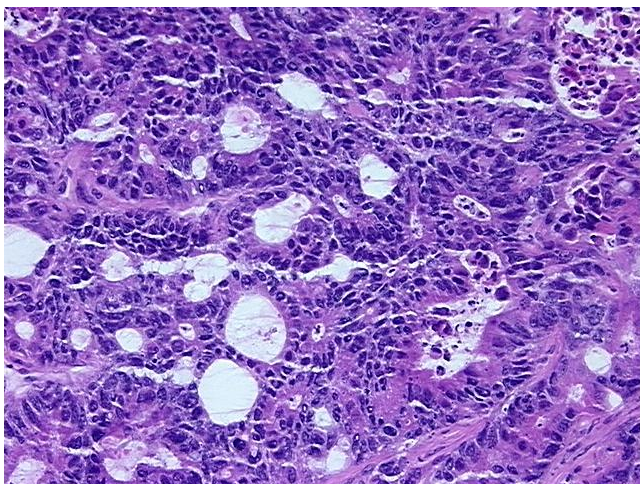


[View online »](#)

Tumor Grade:	Not Reported
Minimum Stage Grouping:	IV
T (Extent of Primary Tumor):	TX
N (Lymph node metastasis):	NX
M (Distant metastasis):	M1
Storage:	Store frozen tissue sections at -80°C.
Stability:	All frozen tissue sections are stable for 1 year from date of purchase if stored at -80°C without repeated freeze/thaws.

Product images:

4x Image



20x Image