

## Product datasheet for CS512995

### Frozen Tissue Sections, Uterus

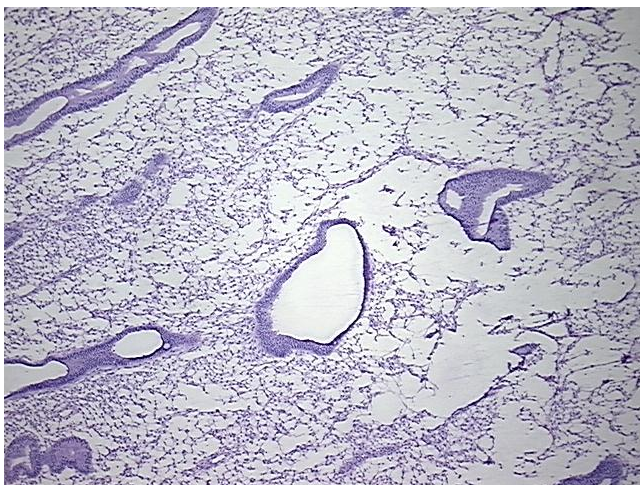
#### Product data:

Product Type:	Frozen Sections
Disease State:	Normal
Diagnosis Category:	Normal
Tissue:	Uterus
Frozen Sample ID:	FR0001F07F
Case ID:	CI0000006926
Tissue of Origin:	Uterus
Site of Finding:	Uterus
Appearance:	R
Sample Diagnosis (from Pathology Verification):	Within normal limits
Normal:	100%
Lesional:	0%
Tumor:	0%
Tumor Hypo/Acellular Stroma:	0%
Tumor Hypercellular Stroma:	0%
Necrosis:	0%
Pathology Verification notes from H&E review:	Non Tumor Structures: 5% Glands, 15% Stroma, 80% Myometrium; Other Features/Comments: proliferative endometrium
CASE Diagnosis (from medical center path report):	Carcinoma in situ of cervix, squamous cell, focal
Age:	29
Gender:	Female
Race:	White or Caucasian

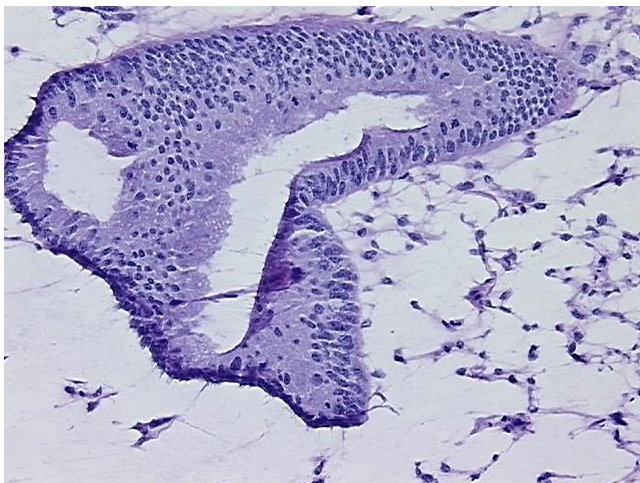


[View online »](#)

Tumor Grade:	Not Reported
T (Extent of Primary Tumor):	Tis
N (Lymph node metastasis):	NX
M (Distant metastasis):	MX
Storage:	Store frozen tissue sections at -80°C.
Stability:	All frozen tissue sections are stable for 1 year from date of purchase if stored at -80°C without repeated freeze/thaws.

**Product images:**

4x Image



20x Image