

Product datasheet for **CS512724**

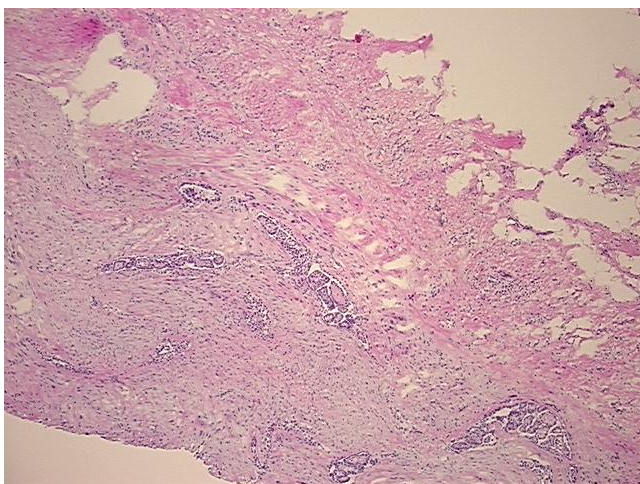
Frozen Tissue Sections, Pleura

Product data:

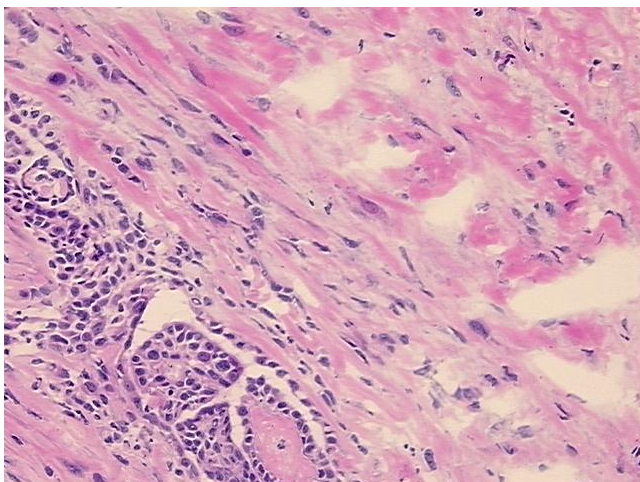
Product Type:	Frozen Sections
Disease State:	Cancer
Diagnosis Category:	Mesothelioma
Tissue:	Lung
Frozen Sample ID:	FR0001D4BA
Case ID:	CI0000006899
Tissue of Origin:	Pleura
Site of Finding:	Pleura
Appearance:	T
Sample Diagnosis (from Pathology Verification):	Mesothelioma of pleura, mixed
Normal:	30%
Lesional:	0%
Tumor:	30%
Tumor Hypo/Acellular Stroma:	40%
Tumor Hypercellular Stroma:	0%
Necrosis:	0%
Pathology Verification notes from H&E review:	Tumor Stroma (Hypo/Acellular): Fibrosis; Non Tumor Structures: 70% Skeletal muscle, 30% Interstitial tissue
CASE Diagnosis (from medical center path report):	Mesothelioma of pleura, mixed
Age:	58
Gender:	Male
Race:	White or Caucasian


[View online »](#)

Tumor Grade:	Not Reported
Minimum Stage Grouping:	II
T (Extent of Primary Tumor):	T2
N (Lymph node metastasis):	N0
M (Distant metastasis):	MX
Storage:	Store frozen tissue sections at -80°C.
Stability:	All frozen tissue sections are stable for 1 year from date of purchase if stored at -80°C without repeated freeze/thaws.

Product images:


4x Image



20x Image