

Product datasheet for **CS512574**

Frozen Tissue Sections, Endometriotic tissue

Product data:

| | |
|---------------------------------------------------|-----------------------------------------------------------------------------------------------------------------|
| Product Type: | Frozen Sections |
| Disease State: | Other Disease |
| Diagnosis Category: | Endometriosis |
| Tissue: | Endometriotic tissue |
| Frozen Sample ID: | FR0001F054 |
| Case ID: | CI0000006877 |
| Tissue of Origin: | Endometriotic tissue |
| Site of Finding: | Ovary: left |
| Appearance: | L |
| Sample Diagnosis (from Pathology Verification): | Endometriosis |
| Normal: | 75% |
| Lesional: | 25% |
| Tumor: | 0% |
| Tumor Hypo/Acellular Stroma: | 0% |
| Tumor Hypercellular Stroma: | 0% |
| Necrosis: | 0% |
| Pathology Verification notes from H&E review: | endometriosis: 1% epithelium, 24% hemosiderin-laden stroma; normal ovary: 30% ovarian stroma, 45% hilar vessels |
| CASE Diagnosis (from medical center path report): | Endometriosis |
| Age: | 38 |
| Gender: | Female |
| Race: | White or Caucasian |

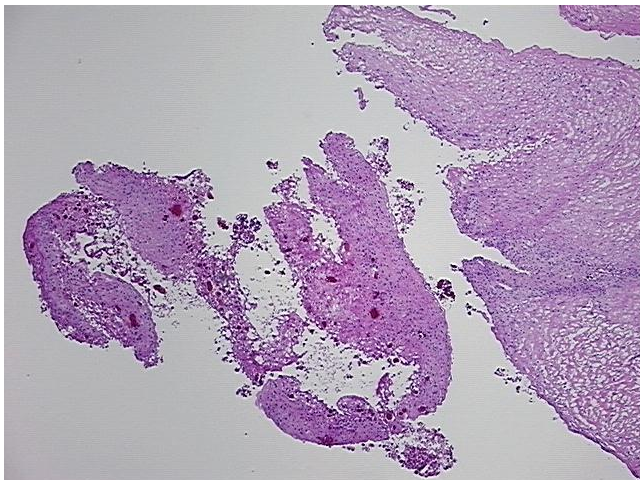


[View online »](#)

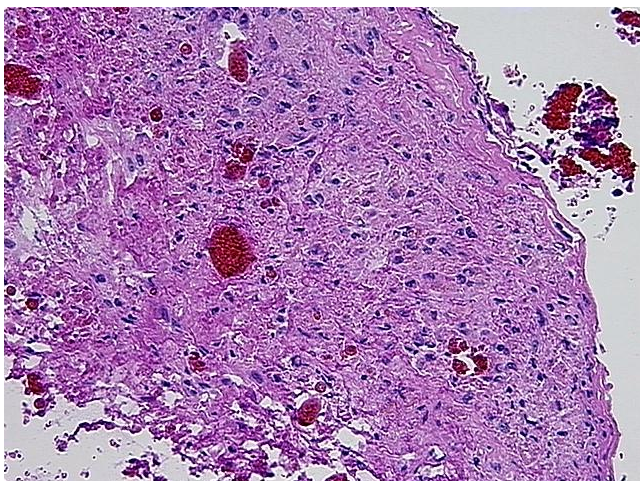
Storage: Store frozen tissue sections at -80°C .

Stability: All frozen tissue sections are stable for 1 year from date of purchase if stored at -80°C without repeated freeze/thaws.

Product images:



4x Image



20x Image