

Product datasheet for **CS512573**

Frozen Tissue Sections, Endometriotic tissue

Product data:

Product Type:	Frozen Sections
Disease State:	Other Disease
Diagnosis Category:	Endometriosis
Tissue:	Endometriotic tissue
Frozen Sample ID:	FR0001F053
Case ID:	CI0000006877
Tissue of Origin:	Endometriotic tissue
Site of Finding:	Ovary: left
Appearance:	L
Sample Diagnosis (from Pathology Verification):	Endometriosis
Normal:	70%
Lesional:	30%
Tumor:	0%
Tumor Hypo/Acellular Stroma:	0%
Tumor Hypercellular Stroma:	0%
Necrosis:	0%
Pathology Verification notes from H&E review:	endometriosis: 10% epithelium, 20% hemosiderin-laden stroma; normal ovary: 70% ovarian stroma, 0% hilar vessels
CASE Diagnosis (from medical center path report):	Endometriosis
Age:	38
Gender:	Female
Race:	White or Caucasian

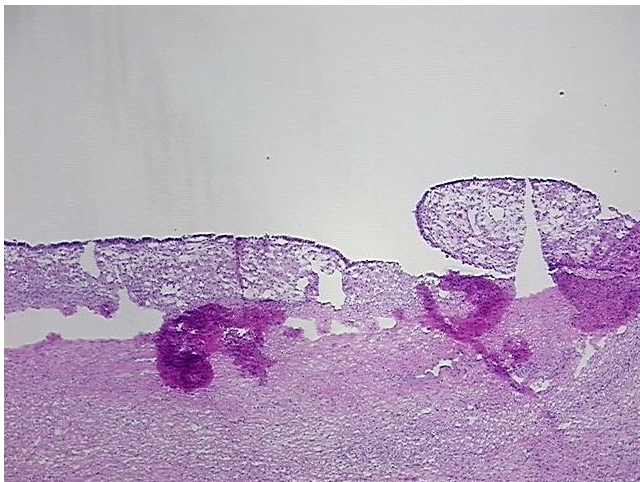


[View online »](#)

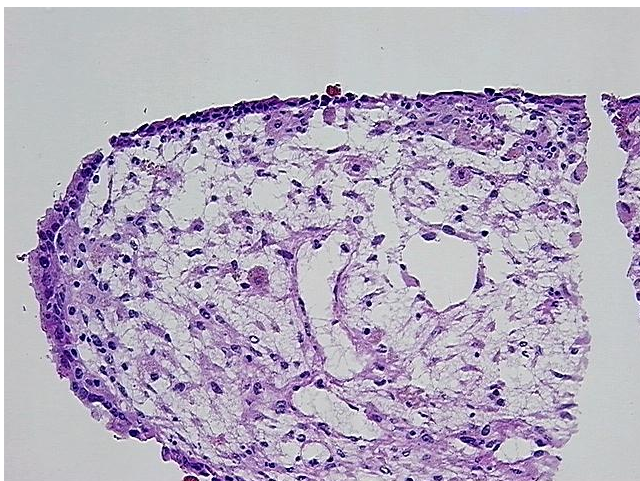
Storage: Store frozen tissue sections at -80°C .

Stability: All frozen tissue sections are stable for 1 year from date of purchase if stored at -80°C without repeated freeze/thaws.

Product images:



4x Image



20x Image