

Product datasheet for **CS512038**

Frozen Tissue Sections, Colon

Product data:

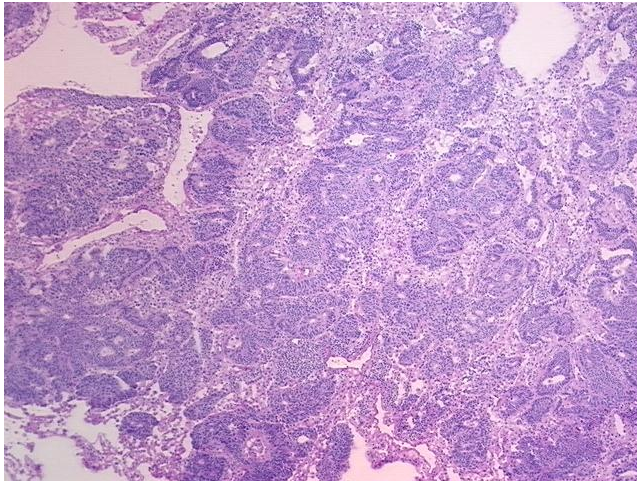
Product Type:	Frozen Sections
Disease State:	Cancer
Diagnosis Category:	Colorectal Cancer
Tissue:	Colon
Frozen Sample ID:	FR0001D1FD
Case ID:	CI0000006823
Tissue of Origin:	Colon
Site of Finding:	Lung
Appearance:	T
Sample Diagnosis (from Pathology Verification):	Adenocarcinoma of colon, metastatic
Normal:	0%
Lesional:	0%
Tumor:	45%
Tumor Hypo/Acellular Stroma:	55%
Tumor Hypercellular Stroma:	0%
Necrosis:	0%
Pathology Verification notes from H&E review:	tumor stroma contains fibroblasts and scattered lymphoplasmacytic infiltrate
CASE Diagnosis (from medical center path report):	Adenocarcinoma of colon, metastatic
Age:	44
Gender:	Female
Race:	White or Caucasian



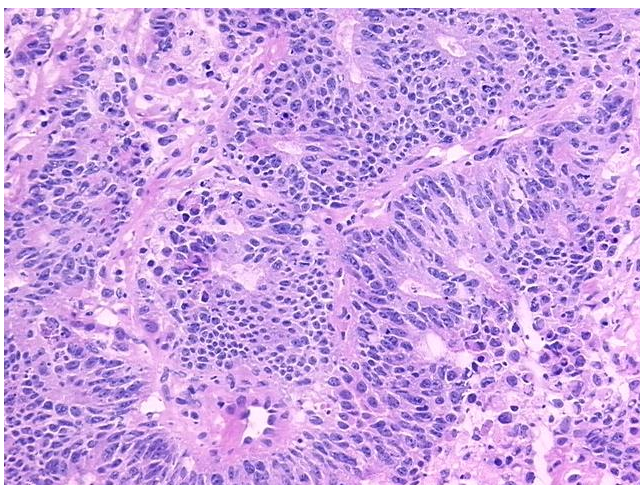
[View online »](#)

Tumor Grade:	Not Reported
Minimum Stage Grouping:	IV
T (Extent of Primary Tumor):	TX
N (Lymph node metastasis):	NX
M (Distant metastasis):	M1
Diagnostic Test Results:	Verhoeff-Van Gieson ~ Elastin stain, Pleura not involved; Cytokeratin 7 ~ CK7 ! by IHC, Negative; Cytokeratin 20 ~ CK20 ! by IHC, Positive
Storage:	Store frozen tissue sections at -80°C.
Stability:	All frozen tissue sections are stable for 1 year from date of purchase if stored at -80°C without repeated freeze/thaws.

Product images:



4x Image



20x Image