

## Product datasheet for CS512016

### Frozen Tissue Sections, Artery: peripheral

#### Product data:

Product Type:	Frozen Sections
Disease State:	Normal
Diagnosis Category:	Normal
Tissue:	Artery
Frozen Sample ID:	FR0001D332
Case ID:	CI0000006821
Tissue of Origin:	Artery: peripheral
Site of Finding:	Skin
Appearance:	R
Sample Diagnosis (from Pathology Verification):	Within normal limits
Normal:	100%
Lesional:	0%
Tumor:	0%
Tumor Hypo/Acellular Stroma:	0%
Tumor Hypercellular Stroma:	0%
Necrosis:	0%
Pathology Verification notes from H&E review:	Non Tumor Structures: 15% Epidermis, 25% Dermis, 60% Subcutaneous tissue
CASE Diagnosis (from medical center path report):	Atherosclerosis
Age:	47
Gender:	Male
Race:	Black or African American

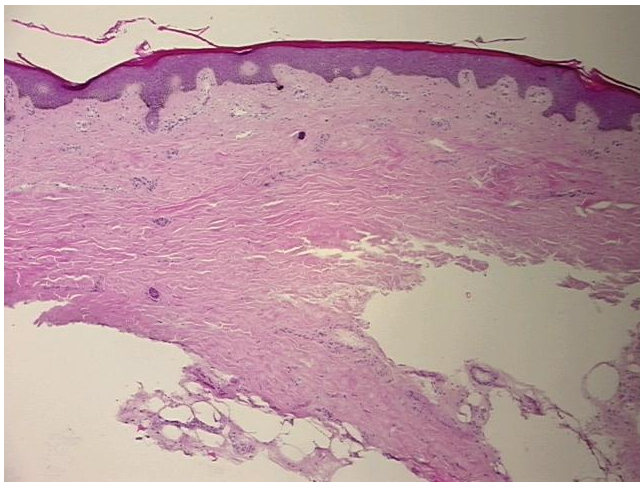


[View online »](#)

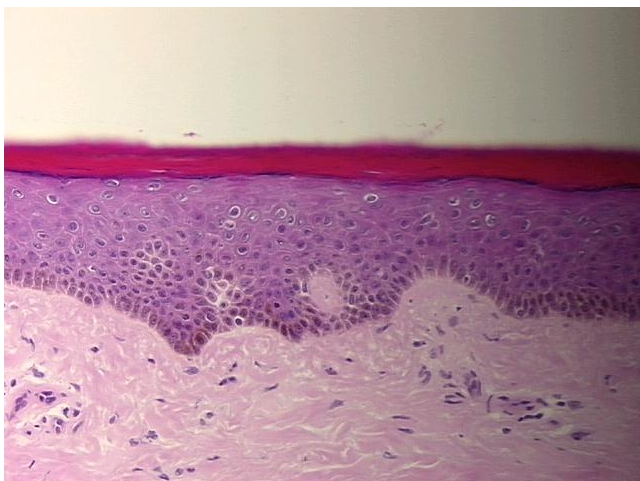
**Storage:** Store frozen tissue sections at -80°C.

**Stability:** All frozen tissue sections are stable for 1 year from date of purchase if stored at -80°C without repeated freeze/thaws.

**Product images:**



4x Image



20x Image