

Product datasheet for **CS511913**

Frozen Tissue Sections, Stomach

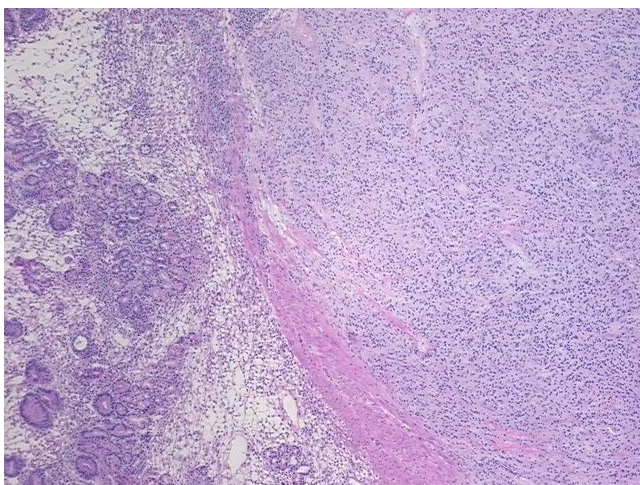
Product data:

Product Type:	Frozen Sections
Disease State:	Other Disease
Diagnosis Category:	Gastrointestinal Stromal Tumor (GIST)
Tissue:	Stomach
Frozen Sample ID:	FR0001D373
Case ID:	CI0000006816
Tissue of Origin:	Stomach
Site of Finding:	Stomach
Appearance:	T
Sample Diagnosis (from Pathology Verification):	Gastrointestinal stromal tumor of stomach
Normal:	40%
Lesional:	0%
Tumor:	45%
Tumor Hypo/Acellular Stroma:	0%
Tumor Hypercellular Stroma:	15%
Necrosis:	0%
Pathology Verification notes from H&E review:	Tumor Stroma (Cellular): Fibroblastic cells, Inflammatory cells; Inflammation: Moderate Lymphoplasmacytic infiltrate
CASE Diagnosis (from medical center path report):	Gastrointestinal stromal tumor of stomach
Age:	63
Gender:	Female
Race:	White or Caucasian

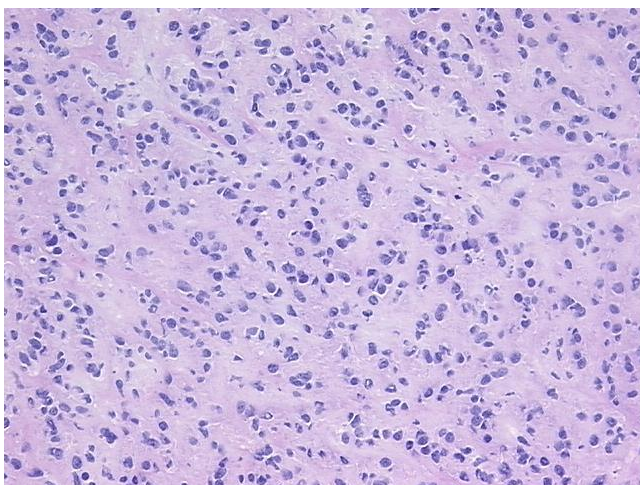


[View online »](#)

Tumor Grade:	Not Reported
Minimum Stage Grouping:	Not Reported
T (Extent of Primary Tumor):	Not Reported
N (Lymph node metastasis):	Not Reported
M (Distant metastasis):	Not Reported
Diagnostic Test Results:	CD117 ~ C-kit ~ SCFR ! by IHC,Positive
Storage:	Store frozen tissue sections at -80°C.
Stability:	All frozen tissue sections are stable for 1 year from date of purchase if stored at -80°C without repeated freeze/thaws.

Product images:

4x Image



20x Image