

Product datasheet for CS511910

Frozen Tissue Sections, Ovary: left

Product data:

| | |
|---|--|
| Product Type: | Frozen Sections |
| Disease State: | Other Disease |
| Diagnosis Category: | Cysts |
| Tissue: | Ovary |
| Frozen Sample ID: | FR0001D2D9 |
| Case ID: | CI0000006814 |
| Tissue of Origin: | Ovary: left |
| Site of Finding: | Ovary: left |
| Appearance: | L |
| Sample Diagnosis (from Pathology Verification): | Cyst of ovary |
| Normal: | 80% |
| Lesional: | 20% |
| Tumor: | 0% |
| Tumor Hypo/Acellular Stroma: | 0% |
| Tumor Hypercellular Stroma: | 0% |
| Necrosis: | 0% |
| Pathology Verification notes from H&E review: | Non Tumor Structures: 70% Ovarian stroma, 30% Hilar vessels; Other Features/Comments: Lesion: 10% epithelium, 90% stroma |
| CASE Diagnosis (from medical center path report): | Cyst of ovary |
| Age: | 42 |
| Gender: | Female |
| Race: | Black or African American |

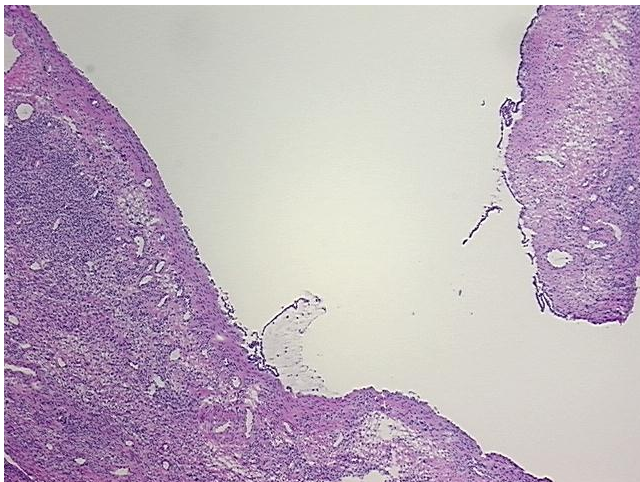


[View online »](#)

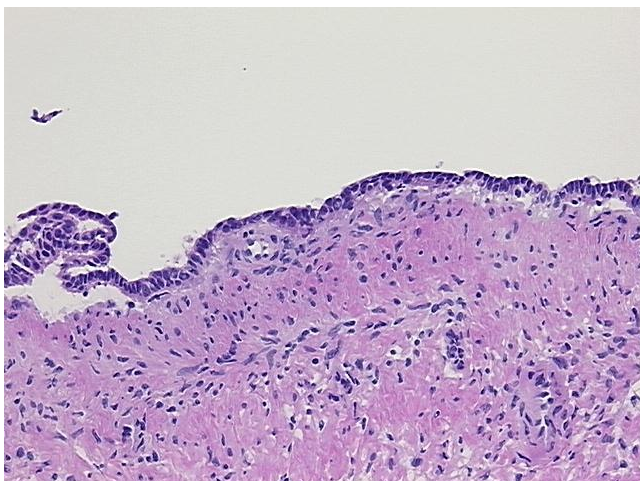
Storage: Store frozen tissue sections at -80°C .

Stability: All frozen tissue sections are stable for 1 year from date of purchase if stored at -80°C without repeated freeze/thaws.

Product images:



4x Image



20x Image