

## Product datasheet for **CS511834**

### Frozen Tissue Sections, Mediastinum

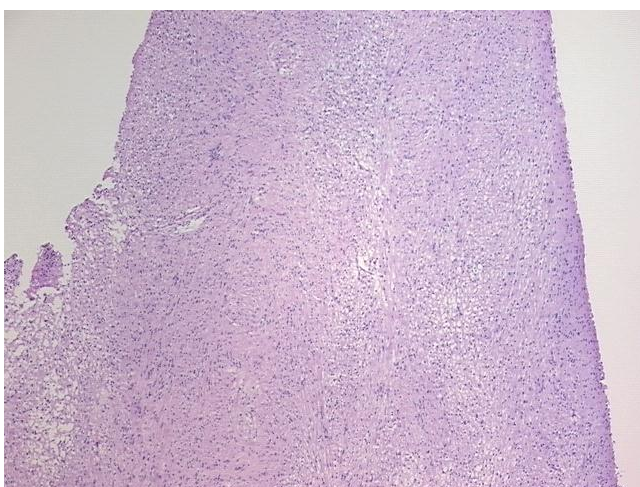
#### Product data:

|   |                    |
|---|--------------------|
| Product Type:                                     | Frozen Sections    |
| Disease State:                                    | Other Disease      |
| Diagnosis Category:                               | Benign Tumors      |
| Tissue:   | Mediastinum        |
| Frozen Sample ID:                                 | FR0001D0B3         |
| Case ID:  | CI0000006808       |
| Tissue of Origin:                                 | Mediastinum        |
| Site of Finding:                                  | Mediastinum        |
| Appearance:                                       | T                  |
| Sample Diagnosis (from Pathology Verification):   | Schwannoma         |
| Normal:   | 0%                 |
| Lesional:   | 0%                 |
| Tumor:  | 98%                |
| Tumor Hypo/Acellular Stroma:                      | 0%                 |
| Tumor Hypercellular Stroma:                       | 2%                 |
| Necrosis:   | 0%                 |
| CASE Diagnosis (from medical center path report): | Schwannoma         |
| Age:  | 42                 |
| Gender:   | Female             |
| Race:   | White or Caucasian |
| Tumor Grade:                                      | Not Reported       |

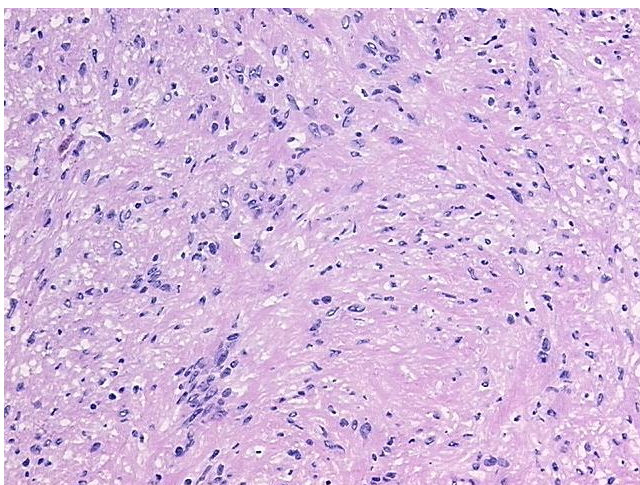


[View online »](#)

|                              |  |
|------------------------------|--|
| Minimum Stage Grouping:      | Not Reported   |
| T (Extent of Primary Tumor): | Not Reported   |
| N (Lymph node metastasis):   | Not Reported   |
| M (Distant metastasis):      | Not Reported   |
| Storage:                     | Store frozen tissue sections at -80°C.   |
| Stability:                   | All frozen tissue sections are stable for 1 year from date of purchase if stored at -80°C without repeated freeze/thaws. |

**Product images:**

4x Image



20x Image