

## Product datasheet for **CS511526**

### Frozen Tissue Sections, Endometriotic tissue

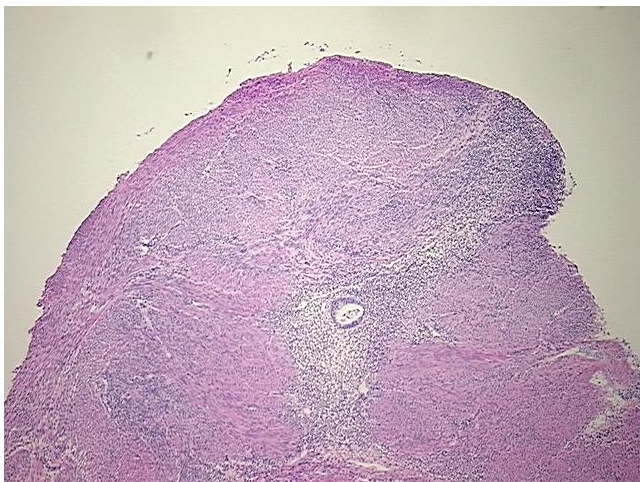
#### Product data:

Product Type:	Frozen Sections
Disease State:	Other Disease
Diagnosis Category:	Adenosis
Tissue:	Myometrium
Frozen Sample ID:	FR0001ED45
Case ID:	CI0000006751
Tissue of Origin:	Endometriotic tissue
Site of Finding:	Uterus
Appearance:	L
Sample Diagnosis (from Pathology Verification):	Adenomyosis of myometrium
Normal:	95%
Lesional:	5%
Tumor:	0%
Tumor Hypo/Acellular Stroma:	0%
Tumor Hypercellular Stroma:	0%
Necrosis:	0%
Pathology Verification notes from H&E review:	Non Tumor Structures: 5% Glands, 5% Stroma, 90% Myometrium
CASE Diagnosis (from medical center path report):	Adenocarcinoma of endometrium, endometrioid, squamous features, focal
Age:	72
Gender:	Female
Race:	White or Caucasian

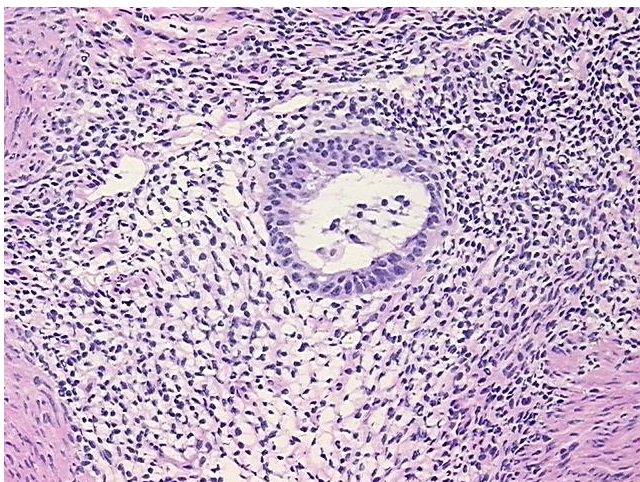


[View online »](#)

Tumor Grade:	FIGO G1: Well differentiated
Minimum Stage Grouping:	IA
T (Extent of Primary Tumor):	T1a
N (Lymph node metastasis):	NX
M (Distant metastasis):	MX
Storage:	Store frozen tissue sections at -80°C.
Stability:	All frozen tissue sections are stable for 1 year from date of purchase if stored at -80°C without repeated freeze/thaws.

**Product images:**

4x Image



20x Image