

## Product datasheet for **CS511324**

### Frozen Tissue Sections, Brain

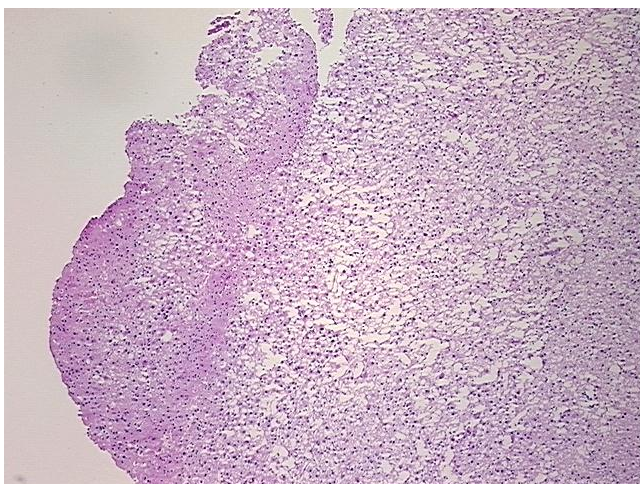
#### Product data:

Product Type:	Frozen Sections
Disease State:	Cancer
Diagnosis Category:	Brain Cancer
Tissue:	Brain
Frozen Sample ID:	FR0001E199
Case ID:	CI0000006721
Tissue of Origin:	Brain
Site of Finding:	Brain
Appearance:	T
Sample Diagnosis (from Pathology Verification):	Astrocytoma, anaplastic
Normal:	0%
Lesional:	70%
Tumor:	10%
Tumor Hypo/Acellular Stroma:	0%
Tumor Hypercellular Stroma:	10%
Necrosis:	10%
Pathology Verification notes from H&E review:	lesion: 100% gliosis
CASE Diagnosis (from medical center path report):	Astrocytoma, anaplastic
Age:	34
Gender:	Female
Race:	Not reported

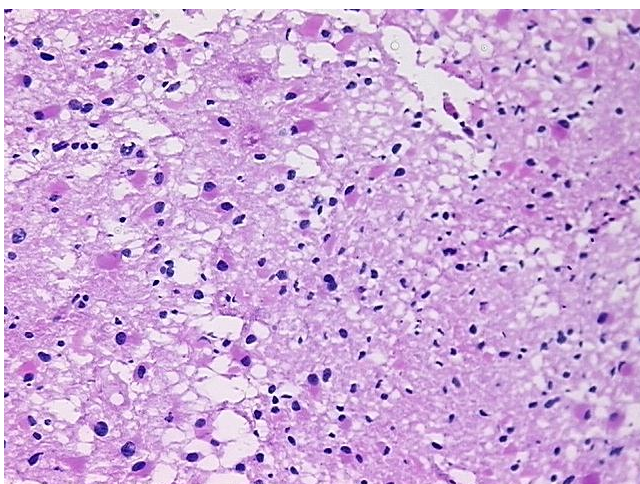


[View online »](#)

Tumor Grade:	WHO Grade III
Minimum Stage Grouping:	Not Reported
T (Extent of Primary Tumor):	Not Reported
N (Lymph node metastasis):	Not Reported
M (Distant metastasis):	Not Reported
Storage:	Store frozen tissue sections at -80°C.
Stability:	All frozen tissue sections are stable for 1 year from date of purchase if stored at -80°C without repeated freeze/thaws.

**Product images:**

4x Image



20x Image